



# HYDRAULIC FITTINGS HOSE ASSEMBLY TUBE FITTINGS

Product Catalogue



AN ISO 9001 : 2015 Certified Company  
CIN NO : U29309MH2021PTC357179





**Spraytech Automation (India) Pvt. Ltd.** is worlds leading organization in engineering and manufacturing of Industrial Spray Nozzle, Spray Systems, Hydraulic Fittings, Hose Assembly, Tube fittings, Pipe fittings, Instrumentation fittings, all kind of Hydraulic valves and Manifolds.

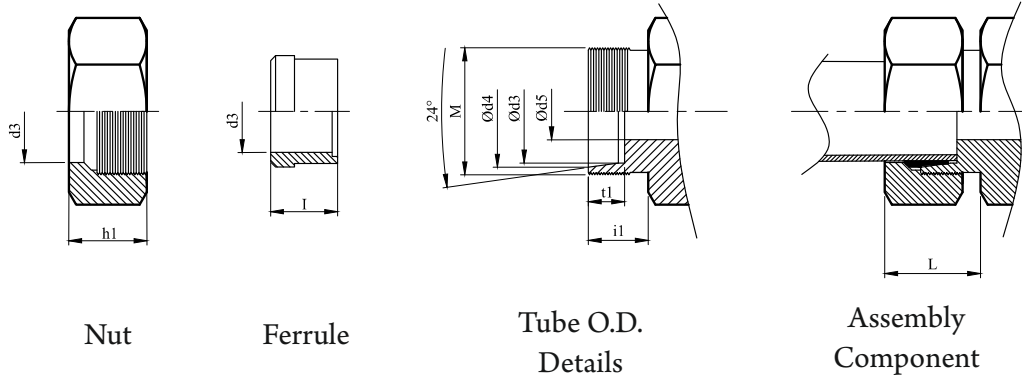
With the experiences of decades in this field and team of skilled engineers we have developed a strong foundation among all over the world.

Spraytech having three plants, headquarter at Wagle Industrial estate, Thane. second at Indapur, Pune and third one at Rabale, Navi Mumbai. All plants are equipped with next generation class CNC machines, heavy material handling equipments to serve raising market demands with no compromise with world class product quality along with this field of engineering we have entered in forging to serve respective product demands.

## INDEX

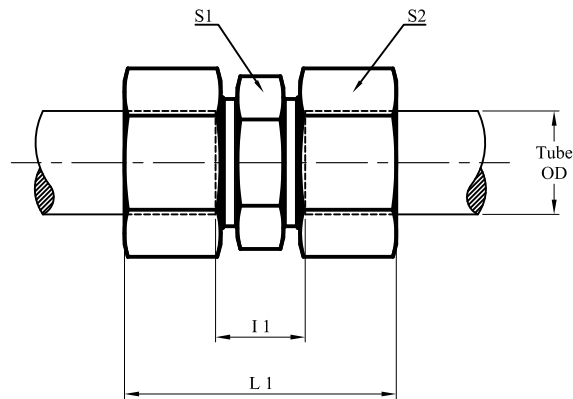
TUBE CONNECTION PARTS	04	BLANKING PLUG FOR 24° TUBE ENDS	22
STRAIGHT COUPLINGS UNION	05	HOLLOW HEX PLUG	23
EQUAL ELBOW UNION	06	REDUCING STANDS PIPES	24
EQUAL TEE UNION	07	REDUCING STANDS PIPES	25
STRAIGHT BULKHEAD COUPLINGS	08	REDUCING SWIVEL STR. ADAPTER WITH O-RING	26
BULKHEAD ELBOW UNION	09	REDUCING SWIVEL STR. ADAPTER WITH O-RING	27
STRAIGHT MALE STUD COUPLINGS	10	STANDPIPE ADAPTOR MALE STUD BSPP	28
STRAIGHT MALE STUD COUPLINGS	11	PARALLEL FEMALE COUPLINGS	29
SWIVEL STUD STRAIGHT AD. WITH O RING	12	PARALLEL TAPER MALE STUD COUPLINGS	30
SWIVEL ELBOW COUPLINGS	13	MALE SRUD TAPER ELBOW	31
SWIVEL BRANCH TEE COUPLINS	14	MALE BRANCH TAPER TEE	32
SWIVEL RUN TEE COUPLINS	15	BSP REDUCING ADAPTOR	33
SWIVEL NUT ELBOW WITH O RING	16	BSP REDUCING AND INCREASER ADAPTOR	34
SWIVEL NUT BRANCH TEE WITH O RING	17	HOSE BSP ADAPTOR	35
SWIVEL NUT RUN TEE WITH O RING	18	PRE-INSTALLATION BODIES	36
WELD NIPPLE	19	SAE SPLIT FLANGES	37
WELDING CONNECTOR	20	PIPE CLAMPS LIGHT DUTY	38
BANJO ELBOW - MALE BSPP	21	PIPE CLAMPS HEAVY DUTY	39
		BONDED SEALS AND COPPER WASHERS	40

## TUBE CONNECTION PARTS



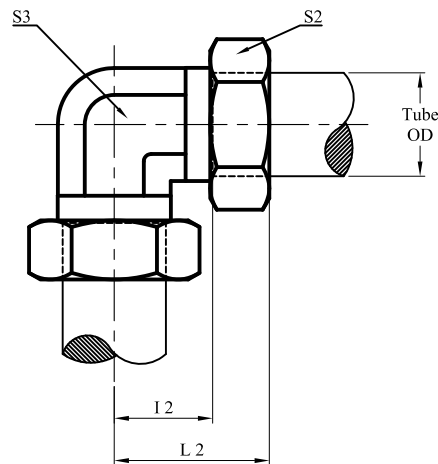
Part No Nut	Part No Ferrule	Series And NP	Tube o.d.	M	$\phi d_3$	$\phi d_4$	$\phi d_5$	$t_1$	$i_1$	S2	$h_1$	$l$	$L^*$
SA-N4LL	SA-F4LL	Very Light LL 100 bar	4	M8 X 1.0	4	5	3	4	8	10	11.5	7	14
SA-N5LL	SA-F5LL		5	M10 X 1.0	5	6.5	3.5	5.5	8	12	11.5	7	14
SA-N6LL	SA-F6LL		6	M10 X 1.0	6	7.5	4.5	5.5	8	12	12	7	14
SA-N8LL	SA-F8LL		8	M12 X 1.0	8	9	6	5.5	9	14	12.5	7	15
SA-N6L	SA-F6L	Light L 250 bar	6	M12 X 1.5	6	8.1	4	7	10	14	14.5	10	18
SA-N8L	SA-F8L		8	M14 X 1.5	8	10.1	6	7	10	17	14.5	9.5	18
SA-N10L	SA-F10L		10	M16 X 1.5	10	12.3	8	7	11	19	15.5	10	20
SA-N12L	SA-F12L		12	M18 X 1.5	12	14.3	10	7	11	22	15.5	9.5	19
SA-N15L	SA-F15L		15	M22 X 1.5	15	17.3	12	7	12	27	17	10	21
SA-N18L	SA-F18L	160 bar	18	M26 X 1.5	18	20.3	15	7.5	12	32	18	10	22
SA-N22L	SA-F22L		22	M30 X 2.0	22	24.3	19	7.5	14	36	20	10.5	24
SA-N28L	SA-F28L	100 bar	28	M36 X 2.0	28	30.3	24	7	14	41	21	11	25
SA-N35L	SA-F35L		35	M45 X 2.0	35	38	30	10.5	16	50	24	13	28
SA-N42L	SA-F42L		42	M52 X 2.0	42	45	36	11	16	60	24	13	28
SA-N6S	SA-F6S	Heavy S 630 bar	6	M14 X 1.5	6	8.1	4	7	12	17	16.5	10	20
SA-N8S	SA-F8S		8	M16 X 1.5	8	10.1	5	7	12	19	16.5	9.5	20
SA-N10S	SA-F10S		10	M18 X 1.5	10	12.3	7	7.5	12	22	17.5	10	22
SA-N12S	SA-F12S		12	M20 X 1.5	12	14.3	8	7.5	12	24	17.5	9.5	21
SA-N16S	SA-F16S	400 bar	16	M24 X 1.5	16	18.3	12	8.5	14	30	20.5	10	25
SA-N20S	SA-F20S		20	M30 X 2.0	20	22.9	16	10.5	16	36	24	12	28
SA-N25S	SA-F25S		25	M36 X 2.0	25	27.9	20	12	18	46	27	12	31
SA-N30S	SA-F30S	250 bar	30	M42 X 1.5	30	33	25	13.5	20	50	29	13	35
SA-N38S	SA-F38S		38	M52 X 2.0	38	41	32	16	22	60	32.5	13	38

## STRAIGHT COUPLINGS UNION



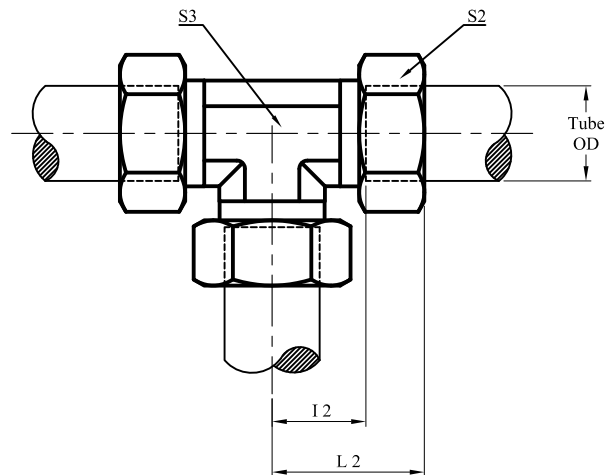
Part No	Series And NP	Tube o.d.	I1	L1	S1	S2
SA-G6L	Light L 250 bar	6	10	41	12	14
SA-G8L		8	11	41	14	17
SA-G10L		10	13	44	17	19
SA-G12L		12	14	44	19	22
SA-G15L		15	16	48	24	27
SA-G18L	160 bar	18	16	50	27	32
SA-G22L		22	20	54	32	36
SA-G28L	100 bar	28	21	57	41	41
SA-G35L		35	20	66	46	50
SA-G42L		42	21	68	55	60
SA-G6S	Heavy S 630 bar	6	16	47	14	17
SA-G8S		8	18	48	17	19
SA-G10S		10	17	51	19	22
SA-G12S		12	19	52	22	24
SA-G16S	400 bar	16	21	59	27	30
SA-G20S		20	23	68	32	36
SA-G25S		25	26	76	41	46
SA-G30S	250 bar	30	27	83	46	50
SA-G38S		38	29	92	55	60

## EQUAL ELBOW UNION



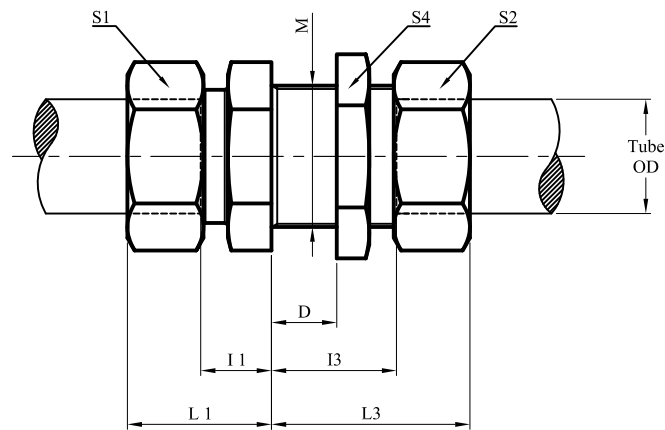
Part No	Series And NP	Tube o.d.	I2	L2	S2	S3
SA-W6L	Light L 250 bar	6	12	27.5	14	12
SA-W8L		8	14	29	17	12
SA-W10L		10	15	30.5	19	14
SA-W12L		12	17	32	22	17
SA-W15L		15	21	37	27	19
SA-W18L	160 bar	18	23.5	40.5	32	24
SA-W22L		22	27.5	44.5	36	27
SA-W28L	100 bar	28	30.5	48	41	36
SA-W35L		35	34.5	57.5	50	41
SA-W42L		42	40	63.5	60	50
SA-W6S	Heavy S 630 bar	6	16	31.5	17	12
SA-W8S		8	17	32	19	14
SA-W10S		10	17.5	34.5	22	17
SA-W12S		12	21.5	38	24	17
SA-W16S	400 bar	16	24.5	43.5	30	24
SA-W20S		20	26.5	49	36	27
SA-W25S		25	30	55	46	36
SA-G30S	250 bar	30	35.5	63.5	50	41
SA-G38S		38	41	72.5	60	50

## EQUAL TEE UNION



Part No	Series And NP	Tube o.d.	I2	L2	S2	S3
SA-T6L	Light L 250 bar	6	12	27.5	14	12
SA-T8L		8	14	29	17	12
SA-T10L		10	15	30.5	19	14
SA-T12L		12	17	32	22	17
SA-T15L		15	21	37	27	19
SA-T18L	160 bar	18	23.5	40.5	32	24
SA-T22L		22	27.5	44.5	36	27
SA-T28L	100 bar	28	30.5	48	41	36
SA-T35L		35	34.5	57.5	50	41
SA-T42L		42	40	63.5	60	50
SA-T6S	Heavy S 630 bar	6	16	31.5	17	12
SA-T8S		8	17	32	19	14
SA-T10S		10	17.5	34.5	22	17
SA-T12S		12	21.5	38	24	17
SA-T16S	400 bar	16	24.5	43.5	30	24
SA-T20S		20	26.5	49	36	27
SA-T25S		25	30	55	46	36
SA-T30S	250 bar	30	35.5	63.5	50	41
SA-T38S		38	41	72.5	60	50

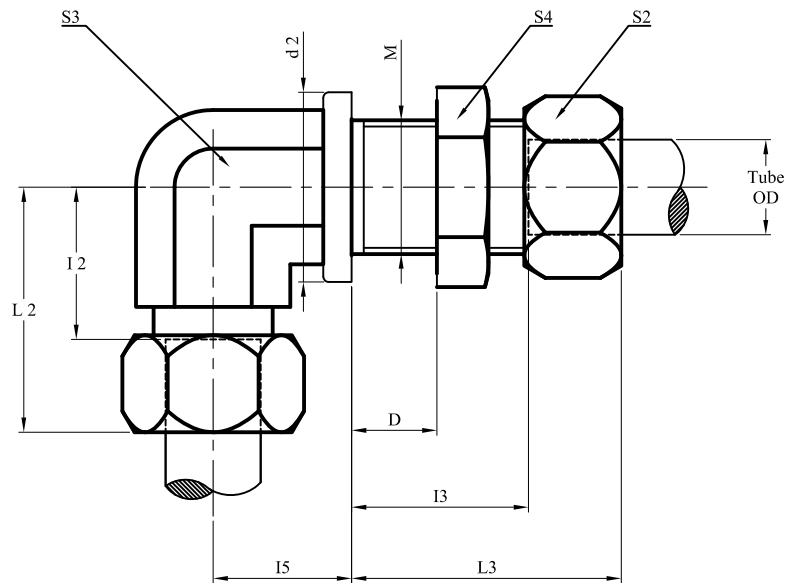
## STRAIGHT BULKHEAD COUPLINGS



Part No	Series And NP	Tube o.d.	M	I1	I3	L1	L3	S1	S2	S4
SA-SV6L	Light L 250 bar	6	M12 X 1.5	7	27	22.5	42.5	17	14	17
SA-SV8L		8	M14 X 1.5	8	27	23	42	19	17	19
SA-SV10L		10	M16 X 1.5	10	28	25.5	43.5	22	19	22
SA-SV12L		12	M18 X 1.5	10	29	25	44	24	22	24
SA-SV15L		15	M22 X 1.5	12	31	28	47	27	27	30
SA-SV18L	160 bar	18	M26 X 1.5	13.5	32.5	30.5	49.5	32	32	36
SA-SV22L		22	M30 X 2	16.5	34.5	33.5	51.5	36	36	41
SA-SV28L	100 bar	28	M36 X 2.0	18.5	35.5	36.5	53.5	41	41	46
SA-SV35L		35	M45 X 2.0	18.5	36.5	41.5	59.5	50	50	55
SA-SV42L		42	M52 X 2.0	19	36	42.5	59.5	60	60	65
SA-SV6S	Heavy S 630 bar	6	M14 X 1.5	12	29	27.5	44.5	19	17	19
SA-SV8S		8	M16 X 1.5	13	29	28	44	22	19	22
SA-SV10S		10	M18 X 1.5	14.5	29.5	31.5	46.5	24	22	24
SA-SV12S		12	M20 X 1.5	14.5	30.5	31	47	27	24	27
SA-SV16S	400 bar	16	M24 X 1.5	16.5	31.5	35.5	50.5	32	30	32
SA-SV20S		20	M30 X 2.0	17.5	33.5	40	56	41	36	41
SA-SV25S		25	M36 X 2.0	20	35.5	45	60	46	46	46
SA-SV30S	250 bar	30	M42 X 2.0	21.5	37.5	49.5	65.5	50	50	50
SA-SV38S		38	M52 X 2.0	22	37	53.5	68.5	65	60	65

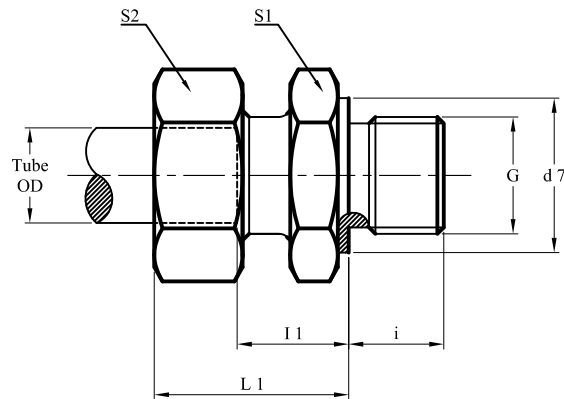


## BULKHEAD ELBOW UNION



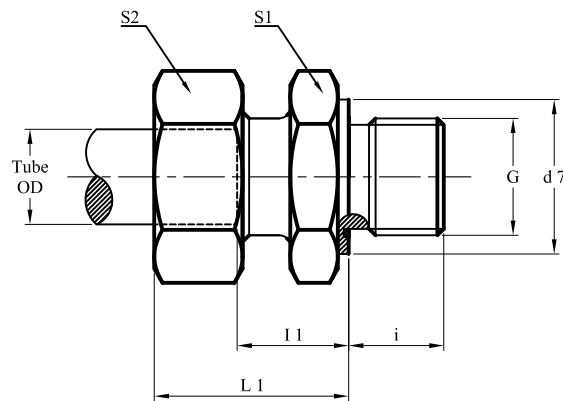
Part No	Series And NP	Tube o.d.	M	d2	I2	I3	I5	L2	L3	S2	S3	S4
SA-WSV6L	Light L 250 bar	6	M12 X 1.5	17	12	27	14	27.5	42.5	14	12	17
SA-WSV8L		8	M14 X 1.5	19	14	27	17	29	42	17	12	19
SA-WSV10L		10	M16 X 1.5	22	15	28	18	30.5	43.5	19	14	22
SA-WSV12L		12	M18 X 1.5	24	17	29	20	32	44	22	17	24
SA-WSV15L		15	M22 X 1.5	27	21	31	23	37	47	27	19	30
SA-WSV18L	160 bar	18	M26 X 1.5	32	23.5	32.5	24	40.5	49.5	32	24	36
SA-WSV22L		22	M30 X 2	36	27.5	34.5	30	44.5	51.5	36	27	41
SA-WSV28L	100 bar	28	M36 X 2.0	42	30.5	35.5	34	48.5	53.5	41	36	46
SA-WSV35L		35	M45 X 2.0	50	34.5	36.5	39	57.5	59.5	50	41	55
SA-WSV42L		42	M52 X 2.0	60	40	36	43	63.5	59.5	60	50	65
SA-WSV6S	Heavy S 630 bar	6	M14 X 1.5	19	16	29	17	31.5	44.5	17	12	19
SA-WSV8S		8	M16 X 1.5	22	17	29	18	32	44	19	14	22
SA-WSV10S		10	M18 X 1.5	24	17.5	29.5	20	34.5	46.5	22	17	24
SA-WSV12S		12	M20 X 1.5	27	21.5	30.5	21	38	47	24	17	27
SA-WSV16S	400 bar	16	M24 X 1.5	30	24.5	31.5	24	43.5	50.5	30	24	32
SA-WSV20S		20	M30 X 2.0	36	26.5	33.5	30	49	56	36	27	41
SA-WSV25S		25	M36 X 2.0	42	30	35	34	55	60	46	36	46
SA-WSV30S	250 bar	30	M42 X 2.0	50	35.5	37.5	39	63.5	65.5	50	41	50
SA-WSV38S		38	M52 X 2.0	60	41	37	43	72.5	68.5	60	50	65

## STRAIGHT MALE STUD COUPLINGS



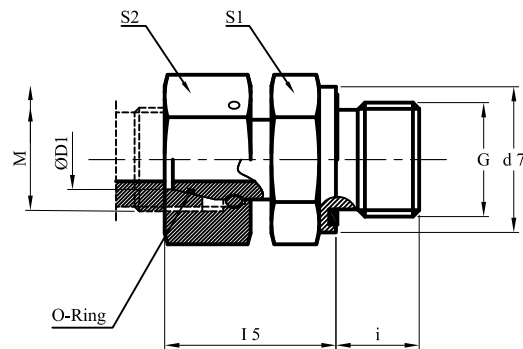
Part No	Series And NP	Tube o.d.	G	d7	l	l1	L1	S1	S2
SA-GE6LR	Light L 250 bar	6	G 1/8 A	14	8	8.5	24	14	14
SA-GE8LR		8	G 1/4 A	19	12	10	25	19	17
SA-GE10LR		10	G 1/4 A	19	12	11	26.5	19	19
SA-GE12LR		12	G 3/8 A	22	12	12.5	27.5	22	22
SA-GE15LR		15	G 1/2 A	27	14	14	30	27	27
SA-GE18LR	160 bar	18	G 1/2 A	27	14	14.5	31.5	27	32
SA-GE22LR		22	G 3/4 A	32	16	16.5	33.5	32	36
SA-GE28LR	100 bar	28	G 1 A	40	18	17.5	35.5	41	41
SA-GE35LR		35	G 1 1/4 A	50	20	17.5	40.5	50	50
SA-GE42LR		42	G 1 1/2 A	55	22	19	42.5	55	60
SA-GE6SR	Heavy S 630 bar	6	G 1/4 A	19	12	13	28.5	19	17
SA-GE8SR		8	G 1/4 A	19	12	15	30	19	19
SA-GE10SR		10	G 3/8 A	22	12	15	32	22	22
SA-GE12SR		12	G 3/8 A	22	12	17	33.5	22	24
SA-GE16SR	400 bar	16	G 1/2 A	27	14	18.5	37.5	27	30
SA-GE20SR		20	G 3/4 A	32	16	20.5	43	32	36
SA-GE25SR		25	G 1 A	40	18	23	48	41	46
SA-GE30SR	250 bar	30	G 1 1/4 A	50	20	23.5	51.5	50	50
SA-GE38SR		38	G 1 1/2 A	55	22	26	57.5	55	60

## STRAIGHT MALE STUD COUPLINGS



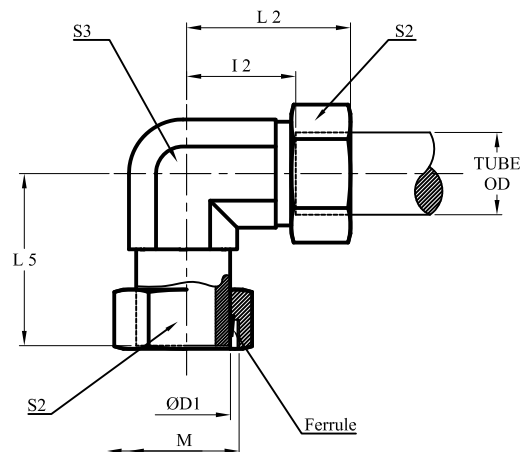
Part No	Series And NP	Tube o.d.	G	d7	l	l1	L1	S1	S2
SA-GE6LRED	Light L 250 bar	6	G 1/8 A	14	8	8.5	24	14	14
SA-GE8LRED		8	G 1/4 A	19	12	10	25	19	17
SA-GE10LRED		10	G 1/4 A	19	12	11	26.5	19	19
SA-GE12LRED		12	G 3/8 A	22	12	12.5	27.5	22	22
SA-GE15LRED		15	G 1/2 A	27	14	14	30	27	27
SA-GE18LRED	160 bar	18	G 1/2 A	27	14	14.5	31.5	27	32
SA-GE22LRED		22	G 3/4 A	32	16	16.5	33.5	32	36
SA-GE28LRED	100 bar	28	G 1 A	40	18	17.5	35.5	41	41
SA-GE35LRED		35	G 1 1/4 A	50	20	17.5	40.5	50	50
SA-GE42LRED		42	G 1 1/2 A	55	22	19	42.5	55	60
SA-GE6SRED	Heavy S 630 bar	6	G 1/4 A	19	12	13	28.5	19	17
SA-GE8SRED		8	G 1/4 A	19	12	15	30	19	19
SA-GE10SRED		10	G 3/8 A	22	12	15	32	22	22
SA-GE12SRED		12	G 3/8 A	22	12	17	33.5	22	24
SA-GE16SRED	400 bar	16	G 1/2 A	27	14	18.5	37.5	27	30
SA-GE20SRED		20	G 3/4 A	32	16	20.5	43	32	36
SA-GE25SRED		25	G 1 A	40	18	23	48	41	46
SA-GE30SRED	250 bar	30	G 1 1/4 A	50	20	23.5	51.5	50	50
SA-GE38SRED		38	G 1 1/2 A	55	22	26	57.5	55	60

## SWIVEL STUD STRAIGHT AD. WITH O RING



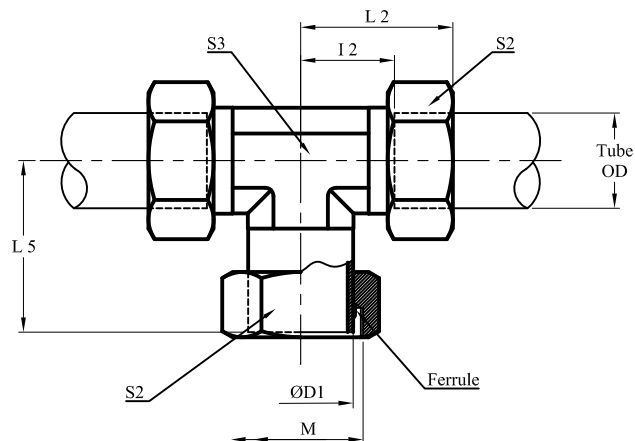
Part No	Series And NP	Tube o.d.	G	M	d7	l	l5	S1	S2
SA-EGE6LRED	Light L 250 bar	6	G 1/8 A	M12 X 1.5	14	8	24.5	14	14
SA-EGE8LRED		8	G 1/4 A	M14 X 1.5	19	12	29.5	19	17
SA-EGE10LRED		10	G 1/4 A	M16 X 1.5	19	12	27.5	19	19
SA-EGE12LRED		12	G 3/8 A	M18 X 1.5	22	12	34.5	22	22
SA-EGE15LRED		15	G 1/2 A	M22 X 1.5	27	14	32	27	27
SA-EGE18LRED	160 bar	18	G 1/2 A	M26 X 1.5	27	14	31.5	27	32
SA-EGE22LRED		22	G 3/4 A	M30 X 2	32	16	32.5	32	36
SA-EGE28LRED	100 bar	28	G 1 A	M36 X 2	40	18	35	41	41
SA-EGE35LRED		35	G 1 1/4 A	M45 X 2	50	20	42.5	50	50
SA-EGE42LRED		42	G 1 1/2 A	M52 X 2	55	22	46.5	55	60
SA-EGE6SRED	Heavy S 630 bar	6	G 1/4 A	M14 X 1.5	19	12	27	19	17
SA-EGE8SRED		8	G 1/4 A	M16 X 1.5	19	12	29.5	19	19
SA-EGE10SRED		10	G 3/8 A	M18 X 1.5	22	12	32	22	22
SA-EGE12SRED		12	G 3/8 A	M20 X 1.5	22	12	34	22	24
SA-EGE16SRED	400 bar	16	G 1/2 A	M24 X 1.5	27	14	37	27	30
SA-EGE20SRED		20	G 3/4 A	M30 X 2	32	16	43	32	36
SA-EGE25SRED		25	G 1 A	M36 X 2	40	18	48	41	46
SA-EGE30SRED	250 bar	30	G 1 1/4 A	M42 X 2	50	20	51	50	50
SA-EGE38SRED		38	G 1 1/2 A	M52 X 2	55	22	60	55	60

## SWIVEL ELBOW COUPLINGS



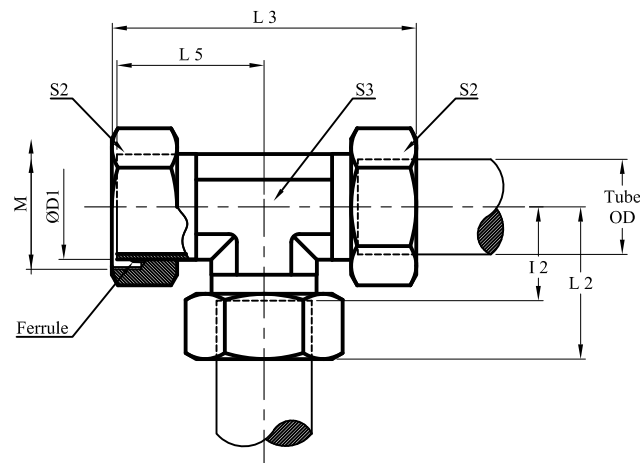
Part No	Series And NP	Tube o.d.	M	I2	I5	L2	S2	S3
SA-EVW6L	Light L 250 bar	6	M12 X 1.5	12	26	27.5	14	12
SA-EVW8L		8	M14 X 1.5	14	27.5	29	17	12
SA-EVW10L		10	M16 X 1.5	15	29	30	19	14
SA-EVW12L		12	M18 X 1.5	17	29.5	32	22	17
SA-EVW15L		15	M22 X 1.5	21	32.5	37	27	19
SA-EVW18L	160 bar	18	M26 X 1.5	23.5	35.5	40.5	32	24
SA-EVW22L		22	M30 X 2	27.5	38.5	44.5	36	27
SA-EVW28L	100 bar	28	M36 X 2	30.5	41.5	48.5	41	36
SA-EVW35L		35	M45 X 2	34.5	51	57.5	50	41
SA-EVW42L		42	M52 X 2	40	56	63.5	60	50
SA-EVW6S	Heavy S 630 bar	6	M14 X 1.5	16	27	31.5	17	12
SA-EVW8S		8	M16 X 1.5	17	27	32	19	14
SA-EVW10S		10	M18 X 1.5	17.5	30	34.5	22	17
SA-EVW12S		12	M20 X 1.5	21.5	31	38	24	17
SA-EVW16S	400 bar	16	M24 X 1.5	24.5	36.5	43.5	30	24
SA-EVW20S		20	M30 X 2	26.5	44.5	49	36	27
SA-EVW25S		25	M36 X 2	30	50	55	46	36
SA-EVW30S	250 bar	30	M42 X 2	35.5	55	63.5	50	41
SA-EVW38S		38	M52 X 2	41	63	72.5	60	50

## SWIVEL BRANCH TEE COUPLINS



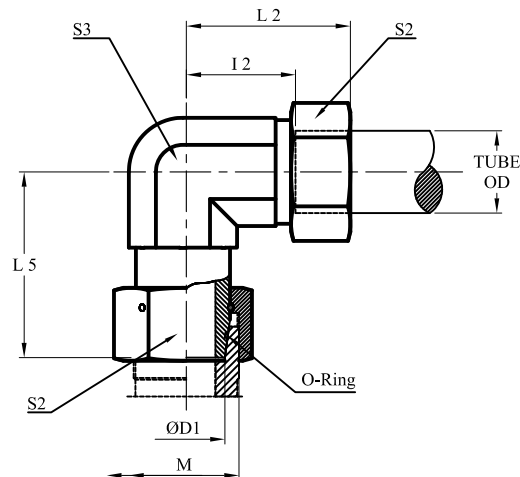
Part No	Series And NP	Tube o.d.	M	I2	I5	L2	S2	S3
SA-EVT6L	Light L 250 bar	6	M12 X 1.5	12	26	27.5	14	12
SA-EVT8L		8	M14 X 1.5	14	27.5	29	17	12
SA-EVT10L		10	M16 X 1.5	15	29	30.5	19	14
SA-EVT12L		12	M18 X 1.5	17	29.5	32	22	17
SA-EVT15L		15	M22 X 1.5	21	32.5	37	27	19
SA-EVT18L	160 bar	18	M26 X 1.5	23.5	35.5	40.5	32	24
SA-EVT22L		22	M30 X 2	27.5	38.5	44.5	36	27
SA-EVT28L	100 bar	28	M36 X 2	30.5	41.5	48.5	41	36
SA-EVT35L		35	M45 X 2	34.5	51	57.5	50	41
SA-EVT42L		42	M52 X 2	40	56	63.5	60	50
SA-EVT6S	Heavy S 630 bar	6	M14 X 1.5	16	27	31.5	17	12
SA-EVT8S		8	M16 X 1.5	17	27.5	32	19	14
SA-EVT10S		10	M18 X 1.5	17.5	30	34.5	22	17
SA-EVT12S		12	M20 X 1.5	21.5	31	38	24	17
SA-EVT16S	400 bar	16	M24 X 1.5	24.5	36.5	43.5	30	24
SA-EVT20S		20	M30 X 2	26.5	44.5	49	36	27
SA-EVT25S		25	M36 X 2	30	50	55	46	36
SA-EVT30S	250 bar	30	M42 X 2	35.5	55	63.5	50	41
SA-EVT38S		38	M52 X 2	41	63	72.5	60	50

## SWIVEL RUN TEE COUPLINS



Part No	Series And NP	Tube o.d.	M	I2	L2	L3	L5	S2	S3
SA-EVL6L	Light L 250 bar	6	M12 X 1.5	12	27.5	53.5	26	14	12
SA-EVL8L		8	M14 X 1.5	14	29	56.5	27.5	17	12
SA-EVL10L		10	M16 X 1.5	15	30.5	59.5	29	19	14
SA-EVL12L		12	M18 X 1.5	17	32	61.5	29.5	22	17
SA-EVL15L		15	M22 X 1.5	21	37	36.5	32.5	27	19
SA-EVL18L	160 bar	18	M26 X 1.5	23.5	40.5	76	35.5	32	24
SA-EVL22L		22	M30 X 2	27.5	44.5	83	38.5	36	27
SA-EVL28L	100 bar	28	M36 X 2	30.5	48.5	90	41.5	41	36
SA-EVL35L		35	M45 X 2	34.5	57.5	108.5	51	50	41
SA-EVL42L		42	M52 X 2	40	63.5	119.5	56	60	50
SA-EVL6S	Heavy S 630 bar	6	M14 X 1.5	16	31.5	58.5	27	17	12
SA-EVL8S		8	M16 X 1.5	17	32	59.5	27.5	19	14
SA-EVL10S		10	M18 X 1.5	17.5	34.5	64.5	30	22	17
SA-EVL12S		12	M20 X 1.5	21.5	38	69	31	24	17
SA-EVT16S	400 bar	16	M24 X 1.5	24.5	43.5	80	36.5	30	24
SA-EVT20S		20	M30 X 2	26.5	49	93.5	44.5	36	27
SA-EVT25S		25	M36 X 2	30	55	105	50	46	36
SA-EVL30S	250 bar	30	M42 X 2	35.5	63.5	118.5	55	50	41
SA-EVL38S		38	M52 X 2	41	72.5	135.5	63	60	50

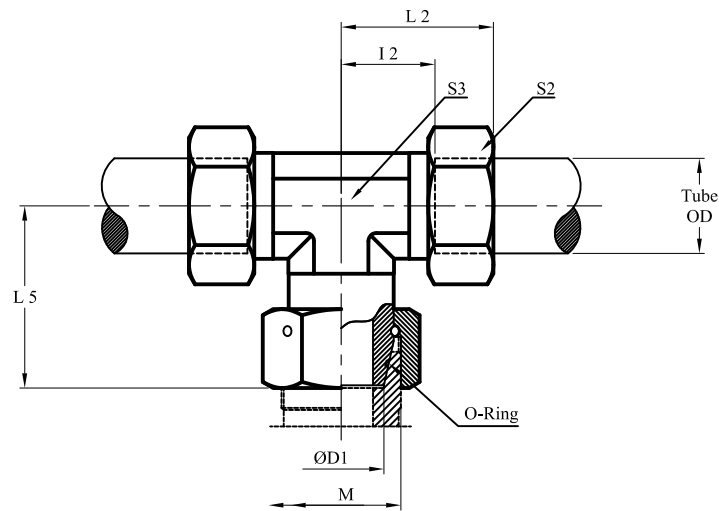
## SWIVEL NUT ELBOW WITH O RING



Part No	Series And NP	Tube o.d.	M	I2	L5	L2	S2	S3
SA-EW6L	Light L 250 bar	6	M12 X 1.5	12	26	27.5	14	12
SA-EW8L		8	M14 X 1.5	14	27.5	29	17	12
SA-EW10L		10	M16 X 1.5	15	29	30.5	19	14
SA-EW12L		12	M18 X 1.5	17	29.5	32	22	17
SA-EW15L		15	M22 X 1.5	21	32.5	37	27	19
SA-EW18L	160 bar	18	M26 X 1.5	23.5	35.5	40.5	32	24
SA-EW22L		22	M30 X 2	27.5	38.5	44.5	36	27
SA-EW28L	100 bar	28	M36 X 2	30.5	41.5	48.5	41	36
SA-EW35L		35	M45 X 2	34.5	51	57.5	50	41
SA-EW42L		42	M52 X 2	40	56	63.5	60	50
SA-EW6S	Heavy S 630 bar	6	M14 X 1.5	16	27	31.5	17	12
SA-EW8S		8	M16 X 1.5	17	27.5	32	19	14
SA-EW10S		10	M18 X 1.5	17.5	30	34.5	22	17
SA-EW12S		12	M20 X 1.5	21.5	31	38	24	17
SA-EW16S	400 bar	16	M24 X 1.5	24.5	36.5	43.5	30	24
SA-EW20S		20	M30 X 2	26.5	44.5	49	36	27
SA-EW25S		25	M36 X 2	30	50	55	46	36
SA-EW30S	250 bar	30	M42 X 2	35.5	55	63.5	50	41
SA-EW38S		38	M52 X 2	41	63	72.5	60	50

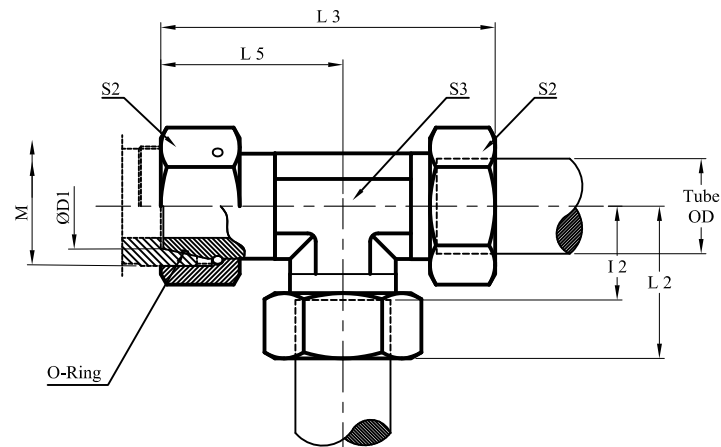


## SWIVEL NUT BRANCH TEE WITH O RING



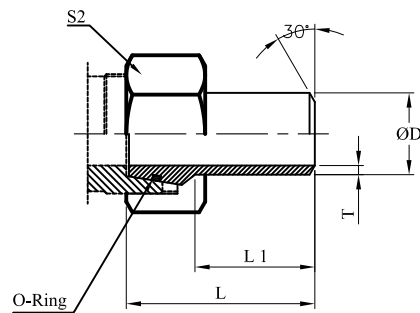
Part No	Series And NP	Tube o.d.	M	I2	I5	L2	S2	S3
SA-ET6L	Light L 250 bar	6	M12 X 1.5	12	26	27.5	14	12
SA-ET8L		8	M14 X 1.5	14	27.5	29	17	12
SA-ET10L		10	M16 X 1.5	15	29	30.5	19	14
SA-ET12L		12	M18 X 1.5	17	29.5	32	22	17
SA-ET15L		15	M22 X 1.5	21	32.5	37	27	19
SA-ET18L	160 bar	18	M26 X 1.5	23.5	35.5	40.5	32	24
SA-ET22L		22	M30 X 2	27.5	38.5	44.5	36	27
SA-ET28L	100 bar	28	M36 X 2	30.5	41.5	48.5	41	36
SA-ET35L		35	M45 X 2	34.5	51	57.5	50	41
SA-ET42L		42	M52 X 2	40	56	63.5	60	50
SA-ET6S	Heavy S 630 bar	6	M14 X 1.5	16	27	31.5	17	12
SA-ET8S		8	M16 X 1.5	17	27.5	32	19	14
SA-ET10S		10	M18 X 1.5	17.5	30	34.5	22	17
SA-ET12S		12	M20 X 1.5	21.5	31	38	24	17
SA-ET16S	400 bar	16	M24 X 1.5	24.5	36.5	43.5	30	24
SA-ET20S		20	M30 X 2	26.5	44.5	49	36	27
SA-ET25S		25	M36 X 2	30	50	55	46	36
SA-ET30S	250 bar	30	M42 X 2	35.5	55	63.5	50	41
SA-ET38S		38	M52 X 2	41	63	72.5	60	50

## SWIVEL NUT RUN TEE WITH O RING



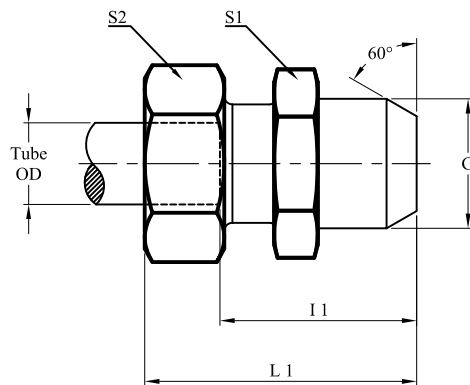
Part No	Series And NP	Tube o.d.	M	I2	L2	L3	L5	S2	S3
SA-EL6L	Light L 250 bar	6	M12 X 1.5	12	27.5	53.5	26	14	12
SA-EL8L		8	M14 X 1.5	14	29	56.5	27.5	17	12
SA-EL10L		10	M16 X 1.5	15	30.5	59.5	29	19	14
SA-EL12L		12	M18 X 1.5	17	32	61.5	29.5	22	17
SA-EL15L		15	M22 X 1.5	21	37	69.5	32.5	27	19
SA-EL8L	160 bar	18	M26 X 1.5	23.5	40.5	76	35.5	32	24
SA-EL22L		22	M30 X 2	27.5	44.5	83	38.5	36	27
SA-EL28L	100 bar	28	M36 X 2	30.5	48.5	90	41.5	41	36
SA-EL35L		35	M45 X 2	34.5	57.5	108.5	51	50	41
SA-EL42L		42	M52 X 2	40	63.5	119.5	56	60	50
SA-EL6S	Heavy S 630 bar	6	M14 X 1.5	16	31.5	58.5	27	17	12
SA-EL8S		8	M16 X 1.5	17	32	59.5	27.5	19	14
SA-EL10S		10	M18 X 1.5	17.5	34.5	64.5	30	22	17
SA-EL12S		12	M20 X 1.5	21.5	38	69	31	24	17
SA-EW16S	400 bar	16	M24 X 1.5	24.5	43.5	80	36.5	30	24
SA-EW20S		20	M30 X 2	26.5	49	93.5	44.5	36	27
SA-EW25S		25	M36 X 2	30	55	105	50	46	36
SA-EW30S	250 bar	30	M42 X 2	35.5	63.5	118.5	55	50	41
SA-EW38S		38	M52 X 2	41	72.5	135.5	63	60	50

## WELD NIPPLE



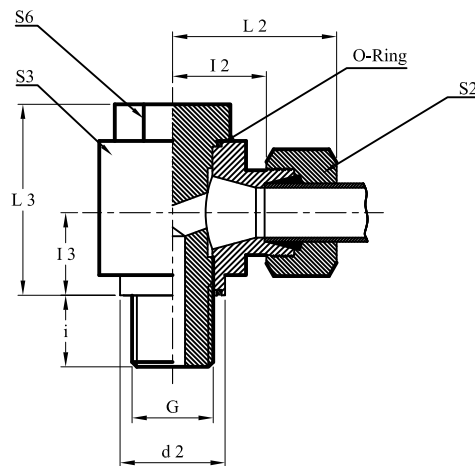
Part No	Series	NP	D	T	L1	L(ref)	S2
SA-WN6L		250 bar	6	1.5	19	32	14
SA-WN8L			8	1.5	19	32	17
SA-WN10L			10	1.5	20	33.5	19
SA-WN12L			12	2	20	33.5	22
SA-WN15L			15	2	22	35	27
SA-WN18L	Light L	160 bar	18	2.5	23	37	32
SA-WN22L			22	2	24.5	39.5	36
SA-WN28L		100 bar	28	3	27.5	42.5	41
SA-WN35L			35	3	30.5	49.5	50
SA-WN42L			42	3	30.5	50	60
SA-WN6S		250 bar	6	1.5	19	32	17
SA-WN8S			8	1.5	19	32	19
SA-WN10S			10	1.5	20	33.5	22
SA-WN12S			12	2	20	33.5	24
SA-WN16S	Heavy S	400 bar	16	2.5	26	40.5	30
SA-WN20S			20	3	28.5	47	36
SA-WN25S			25	4	33.5	53.5	46
SA-WN30S		250 bar	30	4	35.5	57.5	50
SA-WN38S			38	5	39.5	64.5	60

## WELDING CONNECTOR



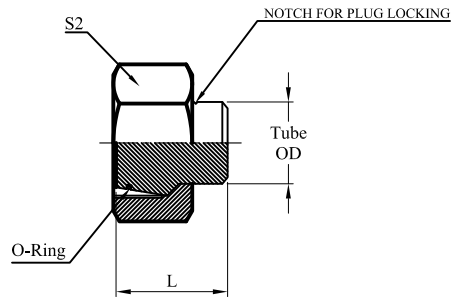
Part No	Series And NP	Tube o.d.	G	L1	I1	S1	S2
SA-AS6L	Light L 250 bar	6	10	29	14	12	14
SA-AS8L		8	12	31	16	14	17
SA-AS10L		10	14	33	18	17	19
SA-AS12L		12	16	33	18	19	22
SA-AS15L		15	19	37	22	22	27
SA-AS18L	160 bar	18	22	40	23.5	27	32
SA-AS22L		22	27	45	28.5	32	36
SA-AS28L	100 bar	28	32	47	30.5	41	41
SA-AS35L		35	40	54	32.5	60	50
SA-AS42L		42	46	58	35	55	60
SA-AS6S	Heavy S 630 bar	6	11	34	19	14	17
SA-AS8S		8	13	36	21	17	19
SA-AS10S		10	15	39	22.5	19	22
SA-AS12S		12	17	41	24.5	22	24
SA-AS16S	400 bar	16	21	45	26.5	27	30
SA-AS20S		20	26	51	29.5	32	36
SA-AS25S		25	31	56	32	41	46
SA-AS30S	250 bar	30	36	62	35.5	46	50
SA-AS38S		38	44	69	38	55	60

## BANJO ELBOW - MALE BSP



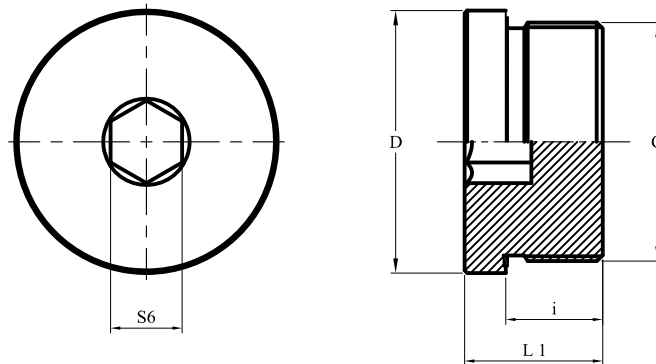
Part No	Series And NP	Tube o.d. (ØD1)	G MALE BSP	S3	S6	L2	I1	L3	I3	d2	I	S2
SA-WHO6LR	Light L 250 bar	6	G 1/8 A	19	19	30	15	25	11	18	8	14
SA-WHO8LR		8	G 1/4 A	24	24	32	17.5	33	14.5	22.5	12	17
SA-WHO10LR		10	G 1/4 A	24	24	33	18.5	33	14.5	22.5	12	19
SA-WHO12LR		12	G 3/8 A	27	27	36	21.5	39	18	27	12	22
SA-WHO15LR		15	G 1/2 A	32	32	40	25	44	20	32	14	27
SA-WHO18LR	100 bar	18	G 1/2 A	36	36	42	25.5	49	23	33	14	32
SA-WHO22LR		22	G 3/4 A	46	41	49	33	55.5	25.5	41	16	36
SA-WHO28LR		28	G 1 A	50	46	52	35.5	66	31	46	18	41
SA-WHO35LR		35	G 1 1/4 A	60	60	61	39.5	76	34	57	20	50
SA-WHO42LR		42	G 1 1/2 A	70	65	67	44	86	40	64	22	60
SA-WHO6SR	Heavy S 400 bar	6	G 1/4 A	24	24	34	19.5	33	14.5	22.5	12	17
SA-WHO8SR		8	G 1/4 A	24	24	34	19.5	33	14.5	22.5	12	19
SA-WHO10SR		10	G 3/8 A	27	27	38	22	39	18	27	12	22
SA-WHO12SR		12	G 3/8 A	27	27	38	22	39	18	27	12	24
SA-WHO16SR		16	G 1/2 A	36	36	45	26.5	49	23	33	14	30
SA-WHO20SR		20	G 3/4 A	46	41	54	32	55.5	25.5	41	16	36
SA-WHO25SR	250 bar	25	G 1 A	50	46	59	35	66	31	46	18	46
SA-WHO30SR		30	G 1 1/4 A	60	60	67	40.5	76	34	57	20	50
SA-WHO38SR		38	G 1 1/2 A	70	65	76	45	86	40	64	22	60

## BLANKING PLUG FOR 24° TUBE ENDS



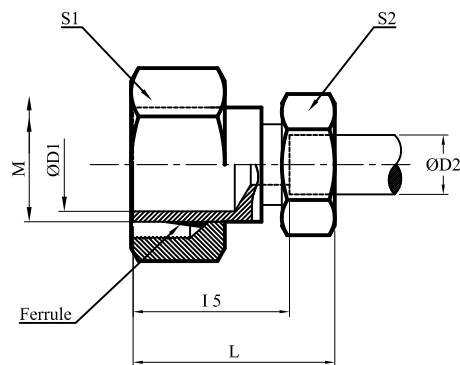
Part No	Series And NP	Tube o.d.	L	S2
SA-VKA6L	Light L 250 bar	6	18.5	14
SA-VKA8L		8	18	17
SA-VKA10L		10	19.5	19
SA-VKA12L		12	19.5	22
SA-VKA15L		15	19	27
SA-VKA18L	160 bar	18	20.5	32
SA-VKA22L		22	21.5	36
SA-VKA28L	100 bar	28	22	41
SA-VKA35L		35	27.5	50
SA-VKA42L		42	28	60
SA-VKA6S	Heavy S 630 bar	6	18.5	17
SA-VKA8S		8	18	19
SA-VKA10S		10	19.5	22
SA-VKA12S		12	19.5	24
SA-VKA16S	400 bar	16	21.5	30
SA-VKA20S		20	26	36
SA-VKA25S		25	28	46
SA-VKA30S	250 bar	30	32.5	50
SA-VKA38S		38	36.5	60

## HOLLOW HEX PLUG



Part No (BSP)	Part No (METRIC)	NP (BAR)	G BSP THREAD	G METRIC THREAD	D1	L1	I	S6
VSTI1/8"BSPED	VSTIS10X1ED	400	1/8"BSP	M10X1	14	12	8	5
	VSTIS12X1.5ED		M12X1.5	17	17	12	6	
VSTI1/4"BSPED	VSTIS14X1.5ED		1/4"BSP	M14X1.5	18.9	17	12	6
	VSTIS16X1.5ED		M16X1.5	22	17	12	8	
VSTI3/8"BSPED			3/8"BSP		22	17	12	8
	VSTIS18X1.5ED		M18X1.5	24	17	12	8	
	VSTIS20X1.5ED		M20X1.5	26	19	14	10	
VSTI1/2"BSPED	VSTIS22X1.5ED		1/2"BSP	M22X1.5	26.9	19	14	12
	VSTIS26X1.5ED		M26X1.5	32	21	16	12	
VSTI3/4"BSPED	VSTIS27X2ED		3/4"BSP	M27X2	32	21	16	12
VSTI1"BSPED	VSTIS33X2ED		1"BSP	M33X2	39.9	22.5	16	17
VSTI1-1/4"BSPED	VSTIS42X2ED		250	1-1/4"BSP	M42X2	49.9	22.5	16
VSTI1-1/2"BSPED	VSTIS48X2ED	1-1/2"BSP		M48X2	55	22.5	16	24

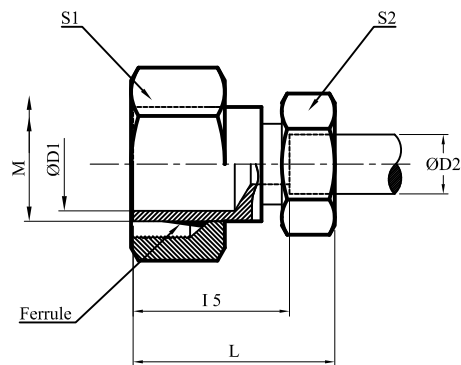
## REDUCING STANDS PIPES



Part No	Series And NP	Tube o. d.		M	I 5	L	S1	S2
		ØD1	ØD2					
SA-KOR8/6L	250 bar	8	6	M14X1.5	23.5	39	17	14
SA-KOR10/6L		10	6	M16X1.5	23.5	39	19	14
SA-KOR10/8L			8		23.5	38.5		
SA-KOR12/6L		12	6	M18X1.5	23.5	39	22	14
SA-KOR12/8L			8		23.5	38.5		
SA-KOR12/10L			10		24.5	40		
SA-KOR15/10L		15	10	M22X1.5	24.5	40	27	19
SA-KOR15/12L			12		24.5	39.5		
SA-KOR18/15L		18	15	M26X1.5	26.5	42.5	32	27
SA-KOR22/15L		160 bar	22	15	M30X2	27.5	43.5	36
SA-KOR22/18L	18		27.0	44.0				
SA-KOR28/15L	15		15	M36X2	28.5	44.5	41	27
SA-KOR28/18L	28	18	28.0		45.0			
SA-KOR28/22L	22	30.0	47.0		36			
SA-KOR35/28L	100 bar	35	28	M45X2	35	53	50	41
SA-KOR42/35L		42	35	M52X2	35	58	60	50

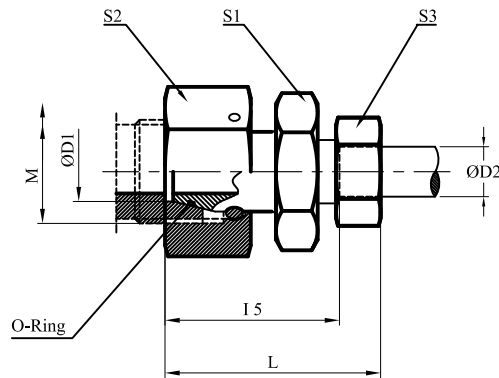


## REDUCING STANDS PIPES



Part No	Series And NP	Tube o. d.		M	I5	L	S1	S2	
		ØD1	ØD2						
SA-KOR8/6S	630 bar	8	6	M16X1.5	25	40.5	19	17	
SA-KOR10/6S		10	6	M18X1.5	26	41.5	22	17	
SA-KOR10/8S			8		26	41.0			19
SA-KOR12/6S		12	6	M20X1.5	27	42.0	24	17	
SA-KOR12/8S			8		27	42.0			19
SA-KOR12/10S			10		26.5	43.0			22
SA-KOR16/6S	400 bar	16	6	M24X1.5	29	44.5	30	17	
SA-KOR16/8S			8		29	44.5		19	
SA-KOR16/10S		10	28.5	45.5	22				
SA-KOR16/12S		12	28.5	43.5	24				
SA-KOR20/16S		20	16	M30X2	34.5	53.5		36	30
SA-KOR25/20S	25	20	M36X2	37.5	60	46	36		
SA-KOR30/25S	250 bar	30	25	M42X2	40	65	50	46	
SA-KOR38/30S		38	30	M52X2	44.5	72.5	60	50	

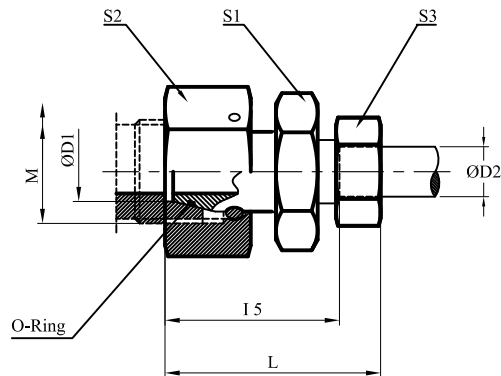
## REDUCING SWIVEL STR. ADAPTER WITH O-RING



### Low Pressure Series

Part No	Series L NP	Tube o. d.		M	15	L	S1	S2	S3
		ØD1	ØD2						
SA-RED8/6L	250 bar	8	6	M14X1.5	23.5	39	12	17	14
SA-RED10/6L		10	6	M16X1.5	25	40.5	14	19	14
SA-RED10/8L			8		25	40			
SA-RED12/6L		12	6	M18X1.5	25	40.5	17	22	14
SA-RED12/8L			8		25	40			
SA-RED12/10L			10		26	41.5			
SA-RED15/10L		15	10	M22X1.5	29.5	45	19	27	19
SA-RED15/12L			12		29.5	44.5			
SA-RED18/15L		18	15	M26X1.5	30	46	24	32	27
SA-RED22/15L		160 bar	22	15	M30X2	34.0	50	27	36
SA-RED22/18L	18		33.5	50.5					
SA-RED28/15L	15		15	M36X2	36	52	32	41	27
SA-RED28/18L	28	18	35.5		52.5				
SA-RED28/22L	22	37.5	54.5						
SA-RED35/28L	100 bar	35	28	M45X2	40.5	58.5	41	50	41
SA-RED42/35L		42	35	M52X2	43	66	50	60	50

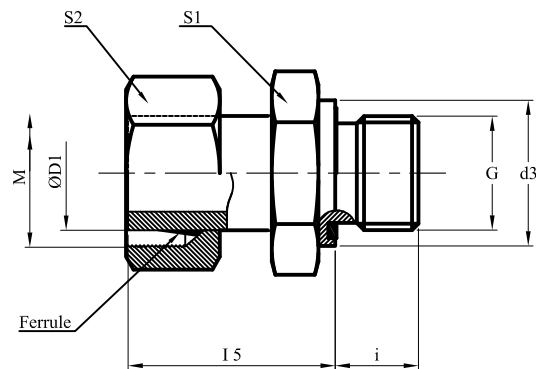
## REDUCING SWIVEL STR. ADAPTER WITH O-RING



### High Pressure Series

Part No	Series L NP	Tube o. d.		M	I5	L	S1	S2	S3		
		ØD1	ØD2								
SA-RED8/6S	630 bar	8	6	M16X1.5	27	42.5	14	19	17		
SA-RED10/6S		10	6	M18X1.5	27.5	43	17	22	17		
SA-RED10/8S					8	42.5	19	19			
SA-RED12/6S		12	6	M20X1.5	29	44.5	17		17		
SA-RED12/8S					8	29	44	17	24	19	
SA-RED12/10S						10	29.5	46.5	19	22	22
SA-RED16/6S	400 bar				16		M24X1.5	32	47.5		
SA-RED16/8S		8	32	47		22		30	19		
SA-RED16/10S			10	31.5		48.5			22	22	
SA-RED16/12S		12		31.5		48			24	24	
SA-RED20/16S		20	16	M30X2		36.5		55.5	27	36	30
SA-RED25/20S						25		20	M36X2	39	51.5
SA-RED30/25S	250 bar	30	M42X2	45	70	41	50	46			
SA-RED38/25S				38	25	M52X2	49	77	50	60	50

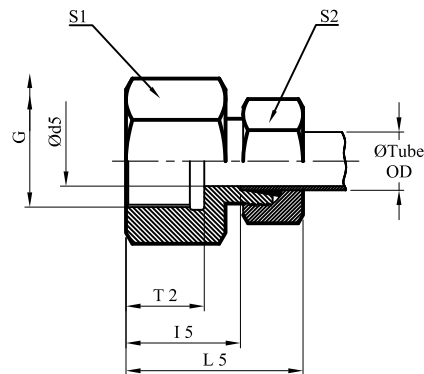
## STANDPIPE ADAPTOR MALE STUD BSPP



### Male BSPP (G) Thread as per ISO 1179-2 With Elastomeric Seal

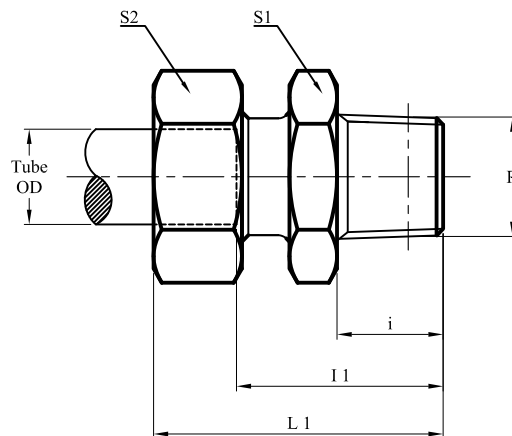
Part No	Series And NP	Tube o.d.	G MALE BSP Threads	M	Ød3	l	15	S1	S2
SA-EVGE6LRED	Light L 250 bar	6	G 1/8 A	M12 X 1.5	14	8	24.5	14	14
SA-EVGE8LRED		8	G 1/4 A	M14 X 1.5	18	12	29.5	19	17
SA-EVGE10LRED		10	G 1/4 A	M16 X 1.5	18	12	27.5	19	19
SA-EVGE12LRED		12	G 3/8 A	M18 X 1.5	22	12	34	22	22
SA-EVGE15LRED		15	G 1/2 A	M22 X 1.5	26	14	32	27	27
SA-EVGE18LRED	160 bar	18	G 1/2 A	M26 X 1.5	26	14	31.5	27	32
SA-EVGE22LRED		22	G 3/4 A	M30 X 1.5	32	16	32.5	32	36
SA-EVGE28LRED	100 bar	28	G 1 A	M36 X 2.0	39	18	35	41	41
SA-EVGE35LRED		35	G 1 1/4 A	M45 X 2.0	49	20	42.5	50	50
SA-EVGE42LRED		42	G 1 1/2 A	M52 X 2.0	55	22	46.5	55	60
SA-EVGE6SRED	Heavy S 630 bar	6	G 1/4 A	M14 X 1.5	18	12	27	19	17
SA-EVGE8SRED		8	G 1/4 A	M16 X 1.5	18	12	29.5	19	19
SA-EVGE10SRED		10	G 3/8 A	M18 X 1.5	22	12	32	22	22
SA-EVGE12SRED		12	G 3/8 A	M20 X 1.5	22	12	34	22	24
SA-EVGE16SRED	400 bar	16	G 1/2 A	M24 X 1.5	26	14	37	27	30
SA-EVGE20SRED		20	G 3/4 A	M30 X 2.0	32	16	43	32	36
SA-EVGE25SRED		25	G 1 A	M36 X 2.0	39	18	48	41	46
SA-EVGE30SRED	250 bar	30	G 1 1/4 A	M42 X 2.0	49	20	51	50	50
SA-EVGE38SRED		38	G 1 1/2 A	M52 X 2.0	55	22	60	55	60

## PARALLEL FEMALE COUPLING



Part No	Series And NP	Tube o.d.	G	Ød5	T2	15	L5	S1	S2
SA-GAI6L	Light L 250 bar	6	G 1/8 A	4	12	19	34.5	14	14
SA-GAI8L		8	G 1/4 A	6	17	24	39	19	17
SA-GAI10L		10	G 1/4 A	8	17	25	40.5	19	19
SA-GAI12L		12	G 3/8 A	10	17	26	41	24	22
SA-GAI15L		15	G 1/2 A	12	20	31	47	27	27
SA-GAI18L	160 bar	18	G 1/2 A	15	20	30.5	47.5	27	32
SA-GAI22L		22	G 3/4 A	19	22	35.5	52.5	36	36
SA-GAI28L	100 bar	28	G 1 A	24	24.5	38	56	41	41
SA-GAI35L		35	G 1 1/4 A	30	26.5	41	64	50	50
SA-GAI42L		42	G 1 1/2 A	36	28.5	42.5	66	55	60
SA-GAI6S	Heavy S 630 bar	6	G 1/4 A	4	17	26	41.5	19	17
SA-GAI8S		8	G 1/4 A	5	17	26	41	19	19
SA-GAI10S		10	G 3/8 A	7	17	26.5	43.5	24	22
SA-GAI12S		12	G 3/8 A	8	17	26.5	43	24	24
SA-GAI16S	400 bar	16	G 1/2 A	12	20	31.5	50.5	30	30
SA-GAI20S		20	G 3/4 A	16	22	34.5	57	36	36
SA-GAI25S		25	G 1 A	20	24.5	37.5	62.5	41	46
SA-GAI30S	250 bar	30	G 1 1/4 A	25	26.5	42	70	55	50
SA-GAI38S		38	G 1 1/2 A	32	28.5	43.5	75	66	60

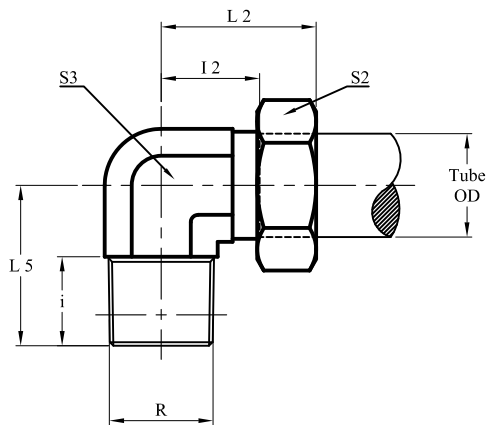
## PARALLEL TAPER MALE STUD COUPLINGS



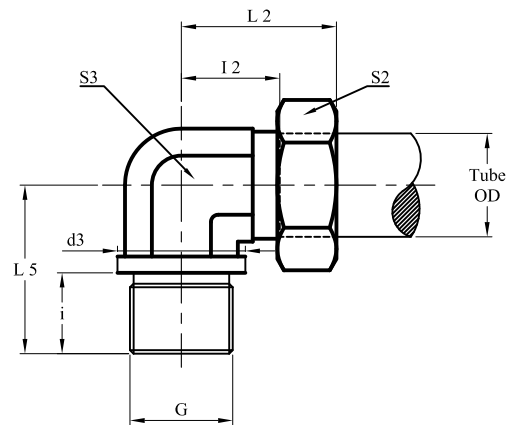
### Male BSPT (R) Thread

Part No	Series And NP	Tube o.d.	R Male BSPT Thread	l	l1	L1	S1	S2
SA-GE6L1/8"BSPT	Light L 250 bar	6	R 1/8 Taper	7.5	14.5	30	14	14
SA-GE8L1/4"BSPT		8	R 1/4 Taper	11	19	34	17	17
SA-GE10L1/4"BSPT		10	R 1/4 Taper	11	20	35.5	17	19
SA-GE12L3/8"BSPT		12	R 3/8 Taper	11.5	20.5	35.5	19	22
SA-GE15L1/2"BSPT		15	R 1/2 Taper	15	26.5	42	24	27
SA-GE18L1/2"BSPT	160 bar	18	R 1/2 Taper	15	26.5	43.5	27	32
SA-GE22L3/4"BSPT		22	R 3/4 Taper	16.5	30	47	32	36
SA-GE28L1"BSPT	100 bar	28	R 1 Taper	19	33.5	51.5	41	41
SA-GE35L1-1/4"BSPT		35	R 1-1/4 Taper	21.5	35	58	46	50
SA-GE42L1-1/2"BSPT		42	R 1-1/2 Taper	21.5	37.5	61	55	60
SA-GE6L1/4"BSPT	Heavy S 630 bar	6	R 1/4 Taper	11	22	41.5	17	17
SA-GE8L1/4"BSPT		8	R 1/4 Taper	11	22	41	17	19
SA-GE10S3/8"BSPT		10	R 3/8 Taper	11.5	24	43.5	19	22
SA-GE12S3/8"BSPT		12	R 3/8 Taper	11.5	26	43	22	24
SA-GE16S1/2"BSPT	400 bar	16	R 1/2 Taper	15	30.5	50.5	27	30
SA-GE20S3/4"BSPT		20	R 3/4 Taper	16.5	34	57	32	36
SA-GE25S1"BSPT		25	R 1 Taper	19	39	62.5	41	46
SA-GE30S1-1/4"BSPT	250 bar	30	R 1-1/4 Taper	21.5	42	70	46	50
SA-GE38S1-1/2"BSPT		38	R 1-1/2 Taper	21.5	44.5	76	55	60

## MALE SRUD TAPER ELBOW



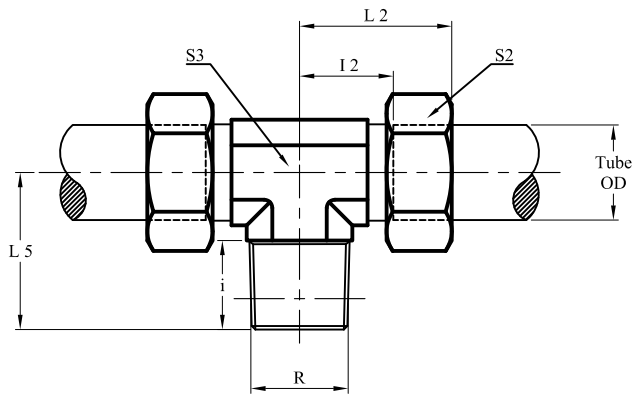
Taper



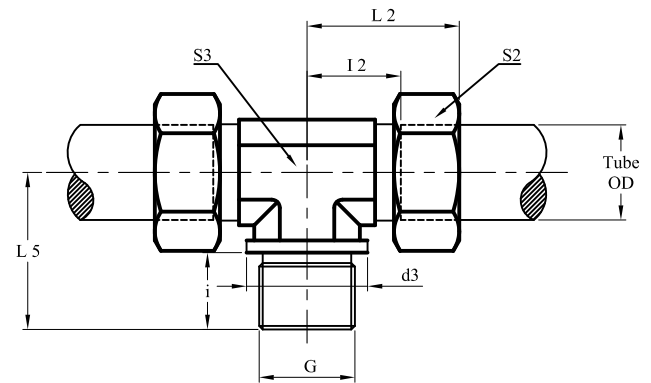
Parallel (Cutting face DIN 3852, Form B)

Part No	Series And NP	Tube o.d.	Male BSPT/ BSP Thread G	I2	L5	L2	S2	S3	I	d3
SA-WE6LR	Light L 250 bar	6	R 1/8 Taper	12	20	27.5	14	12	8	-
SA-WE8LR		8	R 1/4 Taper	14	26	29	17	12	12	-
SA-WE10LR		10	R 1/4 Taper	15	27	30.5	19	14	12	-
SA-WE12LR		12	R 1/4 Taper	17	28	32	22	17	12	-
SA-WE15LR		15	R 1/2 Taper	21	34	37	27	19	14	-
SA-WE18LR	160 bar	18	R 1/2 Taper	23.5	36	40.5	32	24	14	-
SA-WE22LR		22	R 3/4 Taper	27.5	26	44.5	36	27	16	32
SA-WE28LR	100 bar	28	G 1" BSP	30.5	30	48.5	41	36	18	40
SA-WE35LR		35	G 1-1/4" BSP	34.5	34	57.5	50	41	20	50
SA-WE42LR		42	G 1-1/2" BSP	39	39	63.5	60	50	22	55
SA-WE6SR	Heavy S 630 bar	6	R 1/4 Taper	16	26	31.5	17	12	12	-
SA-WE8SR		8	R 1/4 Taper	17	27	32	19	14	12	-
SA-WE10SR		10	R 3/8 Taper	17.5	28	34	22	17	12	-
SA-WE12SR		12	R 3/8 Taper	21.5	28	38	24	17	12	-
SA-WE16SR	400 bar	16	R 1/2 Taper	24.5	32	43.5	30	24	14	-
SA-WE20SR		20	G 3/4" BSP	26.5	26	49	36	27	16	32
SA-WE25SR		25	G 1" BSP	30	30	55	46	36	18	40
SA-WE30SR	250 bar	30	G 1-1/4 BSP	35.5	34	63.5	50	41	20	50
SA-WE38SR		38	G 1-1/2 BSP	41	39	72.5	60	50	22	55

## MALE BRANCH TAPER TEE



Taper

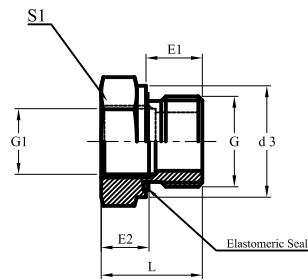


Parallel (Cutting face DIN 3852, Form B)

Part No	Series And NP	Tube o.d.	Male BSPT/ BSP Thread G	I2	L5	L2	S2	S3	I	d3
SA-TE6LR	Light L 250 bar	6	R 1/8 Taper	12	20	27.5	14	12	8	-
SA-TE8LR		8	R 1/4 Taper	14	26	29	17	12	12	-
SA-TE10LR		10	R 1/4 Taper	15	27	30.5	19	14	12	-
SA-TE12LR		12	R 1/4 Taper	17	28	32	22	17	12	-
SA-TE15LR		15	R 1/2 Taper	21	34	37	27	19	14	-
SA-TE18LR	160 bar	18	R 1/2 Taper	23.5	36	40.5	32	24	14	-
SA-TE22LR		22	R 3/4 Taper	27.5	26	44.5	36	27	16	32
SA-TE28LR	100 bar	28	G 1" BSP	30.5	30	48.5	41	36	18	40
SA-TE35LR		35	G 1-1/4" BSP	34.5	34	57.5	50	41	20	50
SA-TE42LR		42	G 1-1/2" BSP	39	39	63.5	60	50	22	55
SA-TE6SR	Heavy S 630 bar	6	R 1/4 Taper	16	26	31.5	17	12	12	-
SA-TE8SR		8	R 1/4 Taper	17	27	32	19	14	12	-
SA-TE10SR		10	R 3/8 Taper	17.5	28	34.5	22	17	12	-
SA-TE12SR		12	R 3/8 Taper	21.5	28	38	24	17	12	-
SA-TE16SR	400 bar	16	R 1/2 Taper	24.5	32	43.5	30	24	14	-
SA-TE20SR		20	G 3/4" BSP	26.5	26	49	36	27	16	32
SA-TE25SR		25	G 1" BSP	30	30	55	46	36	18	40
SA-TE30SR	250 bar	30	G 1-1/4 BSP	35.5	34	63.5	50	41	20	50
SA-TE38SR		38	G 1-1/2 BSP	41	39	72.5	60	50	22	55

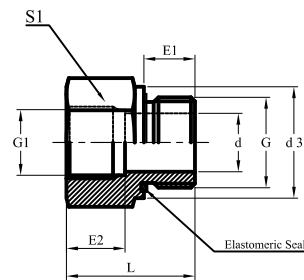


## BSP REDUCING ADAPTOR



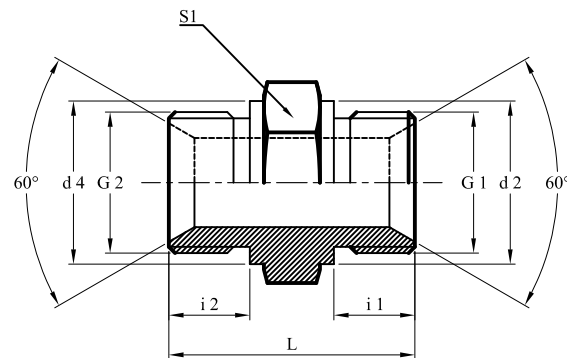
Part No	NP	G (male)	G1 (female)	E1	E2	S1	d3	L
SA-RI 3/8X1/8ED	630 bar	G 3/8 A	G 1/8 B	12	8	22	22	22.5
SA-RI 1/2X1/8ED		G 1/2 A	G 1/8 B	14	8	27	26.9	24
SA-RI 1/2X1/4ED		G 1/2 A	G 1/4 B	14	12	27	26.9	24
SA-RI 3/4X1/4ED	400 bar	G 3/4 A	G 1/4 B	16	12	32	32	26
SA-RI 3/4X3/8ED		G 3/4 A	G 3/8 B	16	12	32	32	26
SA-RI 1X1/4ED		G 1 A	G 1/4 B	18	12	41	39.9	29
SA-RI 1X3/8ED		G 1 A	G 3/8 B	18	12	41	39.9	29
SA-RI 1X1/2ED		G 1 A	G 1/2 B	18	14	41	39.9	29
SA-RI 1-1/4X1/2ED		G 1-1/4 A	G 1/2 B	20	14	50	49.9	32
SA-RI 1-1/4X3/4ED		G 1-1/4 A	G 3/4 B	20	16	50	49.9	32
SA-RI 1-1/2X1/2ED	250 bar	G 1-1/2 A	G 1/2 B	22	14	55	55	36
SA-RI 1-1/2X3/4ED		G 1-1/2 A	G 3/4 B	22	16	55	55	36
SA-RI 1-1/2X1ED		G 1-1/2 A	G 1 B	22	18	55	55	36

## BSP REDUCING AND INCREASER ADAPTOR



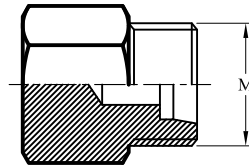
Part No	NP	G (male)	G1 (female)	E1	E2	S1	d3	d	L
SA-RI 1/4X1/8ED	630 bar	G 1/4 A	G 1/8 B	12	12	19	18.9	5	29
SA-RI 3/8X1/4ED		G 3/8 A	G 1/4 B	12	17	22	22	8	36
SA-RI 1/2X3/8ED		G 1/2 A	G 3/8 B	14	17	27	26.9	12	37
SA-RI 3/4X1/2ED	400 bar	G 3/4 A	G 1/2 B	16	20	32	32	16	43
SA-RI 1X3/4ED		G 1 A	G 3/4 B	18	22	41	39.9	20	47
SA-RI 1-1/4X1ED		G 1-1/4 A	G 1 B	20	24.5	50	49.9	25	53
SA-RI 1-1/2X1-1/4ED	250 bar	G 1-1/2 A	G 1-1/4 B	22	26.5	55	54.9	32	58
SA-RI 2X1-1/2ED		G 2 A	G 1-1/2 B	24	28.5	70	68.9	40	65
SA-RI 1/8X1/4ED	630 bar	G 1/8 A	G 1/4 B	8	17	19	14	4	31
SA-RI 1/8X3/8ED		G 1/8 A	G 3/8 B	8	17	22	14	4	32
SA-RI 1/4X3/8ED		G 1/4 A	G 3/8 B	12	17	22	18.9	5	36
SA-RI 1/4X1/2ED		G 1/4 A	G 1/2 B	12	20	27	18.9	5	40
SA-RI 1/4X3/4ED		G 1/4 A	G 3/4 B	12	22	36	18.9	5	43
SA-RI 3/8X1/2ED		G 3/8 A	G 1/2 B	12	20	27	21.9	8	41
SA-RI 3/8X3/4ED	400 bar	G 3/8 A	G 3/4 B	12	22	36	21.9	8	44
SA-RI 1/2X3/4ED		G 1/2 A	G 3/4 B	14	22	36	26.9	12	46
SA-RI 1/2X1ED		G 1/2 A	G 1 B	14	24.5	41	26.9	12	49
SA-RI 1/2X1-1/4ED		G 1/2 A	G 1-1/4 B	14	26.5	55	26.9	12	53
SA-RI 3/4X1ED		G 3/4 A	G 1 B	16	24.5	41	31.9	16	51
SA-RI 3/4X1-1/4ED		G 3/4 A	G 1-1/4 B	16	26.5	55	31.9	16	55
SA-RI 1X1-1/4ED		G 1 A	G 1-1/4 B	18	26.5	55	39.9	20	57
SA-RI 3/4X1-1/2ED	250 bar	G 3/4 A	G 1-1/2 B	16	28.5	60	31.9	16	57
SA-RI 1X1-1/2ED		G 1 A	G 1-1/2 B	18	28.5	60	39.9	20	59
SA-RI 1-1/4X1-1/2ED		G 1-1/4 A	G 1-1/2 B	20	28.5	60	49.9	25	60

## HOSE BSP ADAPTOR



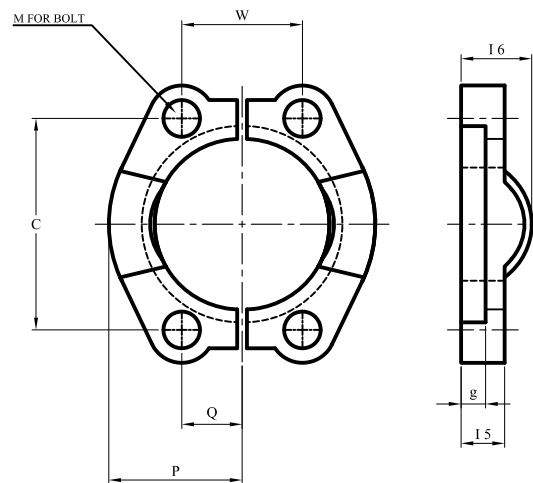
Part No	NP	G1 (male)	G2 (female)	d2	d4	i1	i2	L	S1
SA-AD.1/8X1/8	630 bar	G 1/8 A	G 1/8 A	14	14	8	8	26	14
SA-AD.1/8X1/4		G 1/8 A	G 1/4 A	14	18	8	11	29.5	19
SA-AD.1/4X1/4		G 1/4 A	G 1/4 A	18	18	11	11	33	19
SA-AD.1/4X3/8		G 1/4 A	G 3/8 A	18	22	11	12	36.5	22
SA-AD.1/4X1/2		G 1/4 A	G 1/2 A	18	26	11	14	39	27
SA-AD.3/8X3/8		G 3/8 A	G 3/8 A	22	22	12	12	38	22
SA-AD.3/8X1/2		G 3/8 A	G 1/2 A	22	26	12	14	40.5	27
SA-AD.3/8X3/4		G 3/8 A	G 3/4 A	22	32	12	16	44.5	32
SA-AD.1/2X1/2	400 bar	G 1/2 A	G 1/2 A	26	26	14	14	43	27
SA-AD.1/2X3/4		G 1/2 A	G 3/4 A	26	32	14	16	47	32
SA-AD.1/2X1		G 1/2 A	G 1 A	26	39	14	19	50	41
SA-AD.3/4X3/4		G 3/4 A	G 3/4 A	32	32	16	16	49	32
SA-AD.3/4X1		G 3/4 A	G 1 A	32	39	16	19	52	41
SA-AD.3/4X1-1/4		G 3/4 A	G 1-1/4 A	32	49	16	20	57	50
SA-AD.1X1		G 1 A	G 1 A	39	39	19	19	55	41
SA-AD.1X1-1/4		G 1 A	G 1-1/4 A	39	49	19	20	60	50
SA-AD.1X1-1/2	G 1 A	G 1-1/2 A	39	55	19	22	63	55	
SA-AD.1-1/4X1-1/4	250 bar	G 1-1/4 A	G 1-1/4 A	49	49	20	20	61	50
SA-AD.1-1/4X1-1/2		G 1-1/4 A	G 1-1/4 A	49	55	20	22	64	55
SA-AD.1-1/2X1-1/2		G 1-1/2 A	G 1-1/2 A	55	55	22	22	66	55

## PRE-INSTALLATION BODIES



Part No Nut	Tube o.d.	M	Cone Gauge
SA-VOMO 6L	6	M12X1.5	6L
SA-VOMO 8L	8	M14X1.5	8L
SA-VOMO 10L	10	M16X1.5	10L
SA-VOMO 12L	12	M18X1.5	12L
SA-VOMO 15L	15	M22X1.5	15L
SA-VOMO 18L	18	M26X1.5	18L
SA-VOMO 22L	22	M30X2.0	22L
SA-VOMO 28L	28	M36X2.0	28L
SA-VOMO 35L	35	M45X2.0	35L
SA-VOMO 42L	42	M52X2.0	42L
SA-VOMO 6S	6	M14X1.5	6S
SA-VOMO 8S	8	M16X1.5	8S
SA-VOMO 10S	10	M18X1.5	10S
SA-VOMO 12S	12	M20X1.5	12S
SA-VOMO 16S	16	M24X1.5	16S
SA-VOMO 20S	20	M30X2.0	20S
SA-VOMO 25S	25	M36X2.0	25S
SA-VOMO 30S	30	M42X2.0	30S
SA-VOMO 28S	38	M52X2.0	38S

## SAE SPLIT FLANGES



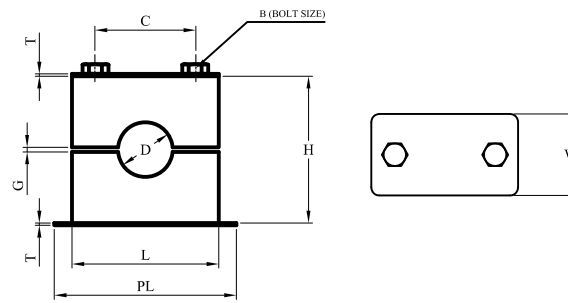
### Standard Pressure Series (Code 61)

Part No	Size	d11	d14	g	I5	I6	C	P	Q	W	M
SA-FLANGES1/2"3000PSI	1/2"	31	24.3	6.2	13	19	38.1	21.8	8	17.5	8.74
SA-FLANGES3/4"3000PSI	3/4"	38.9	32.2	6.2	14	22	47.6	24.9	10	22.3	10.31
SA-FLANGES1"3000PSI	1"	45.3	38.5	7.5	16	22	52.4	28.2	12	26.2	10.31
SA-FLANGES1-1/4"3000PSI	1-1/4"	51.6	43.7	7.5	14	24	58.7	35.3	14	30.2	11.91
SA-FLANGES1-1/2"3000PSI	1-1/2"	61.1	50.8	7.5	16	25	69.9	40.1	17	35.7	13.49
SA-FLANGES2"3000PSI	2"	72.3	62.8	9	16	26	77.8	47.2	21	42.9	13.49
SA-FLANGES2-1/2"3000PSI	2-1/2"	84.9	74.9	9	19	38	88.9	53.1	24	50.8	13.49
SA-FLANGES3"3000PSI	3"	102.4	90.9	9	22	41	106	64.3	30	61.9	16.66

SA-FLANGES1/2"6000PSI	1/2"	32.5	24.6	7.2	16	22	40.5	22.6	8	18.2	8.74
SA-FLANGES3/4"6000PSI	3/4"	42	32.5	8.2	19	28	50.8	29	11	23.8	10.31
SA-FLANGES1"6000PSI	1"	48.4	38.8	9	24	33	57.2	33.8	13	27.8	11.91
SA-FLANGES1-1/4"6000PSI	1-1/4"	54.8	44.5	9.8	27	38	66.6	37.6	15	31.8	13.49
SA-FLANGES1-1/2"6000PSI	1-1/2"	64.3	51.6	12	30	43	79.3	46.5	17	36.5	16.66
SA-FLANGES2"6000PSI	2"	80.2	67.6	12	37	52	96.8	55.9	21	44.5	19.84

Also available SAE flanges connection, Tube connection with weld nipple.

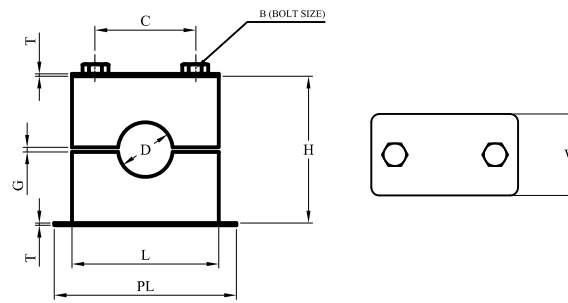
## PIPE CLAMPS LIGHT DUTY



Part No	Pipe MM O/D	Size D Inch O/D	N/B	L	PL	H	C	W	G	B	T
SA-PCL6L	6	1/4"									
SA-PCL8L	8			36	40	25	20	30	0.5	M10	3
SA-PCL10L	10	3/8"	1/8"								
SA-PCL12L	12	1/2"									
SA-PCL14L	14		1/4"								
SA-PCL15L	15										
SA-PCL16L	16	5/8"	3/8"	40	48	32	26	30	0.5	M10	3
SA-PCL18L	18										
SA-PCL19L	19	3/4"									
SA-PCL20L	20										
SA-PCL22L	22		1/2"	48	58	35	33	30	1	M10	3
SA-PCL25L	25	1"									
SA-PCL28L	28		3/4"	57	70	42	40	30	1	M10	3
SA-PCL30L	30										
SA-PCL32L	32	1-1/4"									
SA-PCL35L	35		1"								
SA-PCL38L	38	1-1/2"		70	85	57	52	30	2	M10	3
SA-PCL42L	42		1-1/4"								
SA-PCL48L	48		1-1/2"								
SA-PCL50L	50	2"		85	100	67	66	30	2	M10	3

Material : Polypropylene / Nylon / Aluminum

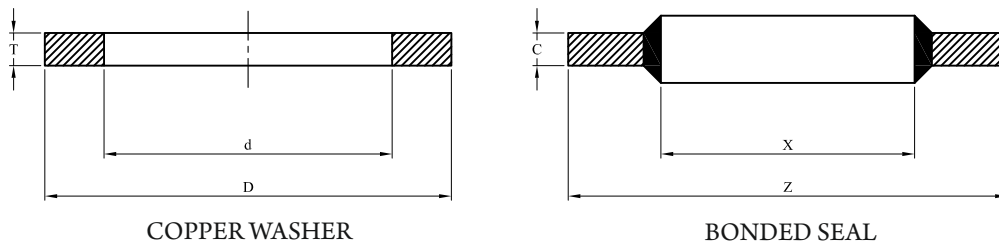
## PIPE CLAMPS HEAVY DUTY



Part No	Pipe MM O/D	Size D Inch O/D	N/B	L	PL	H	C	W	G	B	T
SA-PCH6S	6	1/4"									
SA-PCH8S	8										
SA-PCH10S	10	3/8"	1/8"								
SA-PCH12S	12	1/2"									
SA-PCH14S	14		1/4"	55	70	32	33	30	1	M10	8
SA-PCH15S	15										
SA-PCH16S	16	5/8"	3/8"								
SA-PCH18S	18										
SA-PCH19S	19	3/4"									
SA-PCH20S	20										
SA-PCH22S	22		1/2"	70	85	45	45	30	2	M10	8
SA-PCH25S	25	1"									
SA-PCH28S	28		3/4"								
SA-PCH30S	30										
SA-PCH32S	32	1-1/4"									
SA-PCH35S	35		1"	85	100	61	60	30	2	M10	8
SA-PCH38S	38	1-1/2"									
SA-PCH42S	42		1-1/4"								
SA-PCH48S	48		1-1/2"								
SA-PCH50S	50	2"		115	140	86	90	45	2	M10	8
SA-PCH60S	60		2"							M12	10
SA-PCH65S	65										
SA-PCH70S	70										
SA-PCH73S	73		2-1/2"								
SA-PCH75S	75			152	180	120	122	60	3	M16	10
SA-PCH3NBS	89	3-1/2"	3"								
SA-PCH90S	90										
SA-PCH100S	100		3-1/2"	205	225	167	168	80	3	M20	16
SA-PCH4NBS	114	4-1/2"	4"								
SA-PCH5NBS	141	5-1/2"	5"	250	270	205	206	100	3	M20	16
SA-PCH6NBS	168	6-1/2"	6"								
SA-PCH8NBS	219		8"	330	340	270	268	120	3	M30	25
SA-PCH10NBS			10"	330	425	300		125	3	M30	20

Material : Polypropylene / Nylon / Aluminum

## BONDED SEALS AND COPPER WASHERS



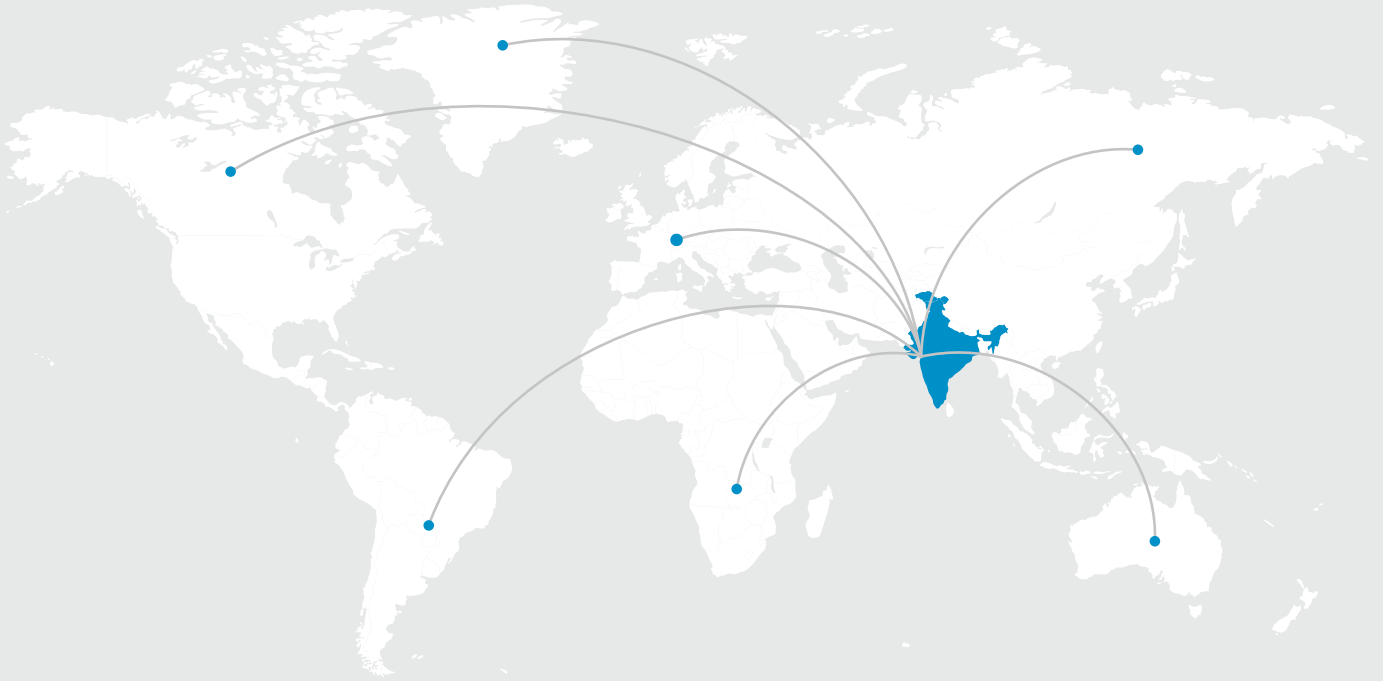
### Copper Washer

Part No	Size	d	D	T
SA-CW1/8BSP	G 1/8 A	10.2	13.9	1
SA-CW1/4BSP	G 1/4 A	14.2	17.9	1.5
SA-CW3/8BSP	G 3/8 A	17.2	20.9	1.5
SA-CW1/2BSP	G 1/2 A	21.2	25.9	1.5
SA-CW5/8BSP	G 5/8 A	23.3	27.9	2
SA-CW3/4BSP	G 3/4 A	27.3	31.9	2
SA-CW1BSP	G 1 A	33.3	38.9	2
SA-CW1-1/4BSP	G 1-1/4 A	42.3	48.9	2
SA-CW1-1/2BSP	G 1-1/2 A	48.3	54.9	2
SA-CW2BSP	G 2 A	60.5	67.8	2.5
SA-CW2-1/4BSP	G 2-1/4 A	75.5	83.8	2.5

### Bonded Seal

Part No (For BSP)	Part No (For Metric)	SIZE BSP	SIZE METRIC	X	Z	C
SA-BS1/8BSP	SA-BSM10	1/8BSP	M10	10.7	18	1.5
	SA-BSM12/M13		M12/M13	13.7	22	1.5
SA-BS1/4BSP	SA-BSM14	1/4BSP	M14	14.7	22	1.5
	SA-BSM16		M16	16.7	24	1.5
SA-BS3/8BSP		3/8BSP		17.4	24	1.5
	SA-BSM18		M18	18.7	26	1.5
	SA-BSM20		M20	20.7	28	1.5
SA-BS1/2BSP	SA-BSM22	1/2BSP	M22	22.7	30	2
SA-BS5/8BSP	SA-BSM24	5/8BSP	M24	24.7	32	2
	SA-BSM26		M26	26.7	35	2
SA-BS3/4BSP		3/4BSP		27.2	36	2
SA-BS7/8BSP	SA-BSM30	7/8BSP	M30	31	39	2
SA-BS1BSP		1BSP		34.3	43	2
	SA-BSM36		M36	36.7	46	2
SA-BS1-1/4BSP	SA-BSM42	1-1/4BSP	M42	42.7	53	3
SA-BS1-1/2BSP	SA-BSM48	1-1/2BSP	M48	48.7	59	3
SA-BS2BSP	SA-BSM60	2BSP	M60	60.7	73	3
SA-BS2-1/2BSP		2-1/2BSP		76.08	90.3	3.38





# OUR BRANCHES

**Regd. Office (Mumbai) :**

Spraytech House, Plot No.: A-132, Road No. 23, Spraytech Circle,  
Wagle Indl. Estate, Thane (W) - 400 604. Mumbai Maharashtra, (India)  
Tel. : 91-022-2582 8929 / 2735 / 2736  
E-mail :- sales@spraytechautomation.com | project@spraytechautomation.com

**Branch Office (Pune) :**

White House, Survey No. 161, Near  
Bhosale Garden Hadapsar, Pune - 411 028.  
E-mail :- sales@spraytechautomation.com

**Rabale (Navi Mumbai) :**

Spraytech Automation India Pvt. Ltd., Plot No.: R-446, T.T.C. Industrial  
Area, MIDC Rabale, Navi Mumbai - 400 701.  
Tel. : 91 99208 30555 / 99875 84555  
E-mail :- sales@spraytechautomation.com | valves@spraytechautomation.com

**Indapur Plant (Pune) :**

Spraytech Automation India Pvt. Ltd., Plot No.: A1/1, Indapur Five Star  
Industrial Area, Village - Loni Devkar Balpudi, Tal. - Indapur,  
Dist. - Pune - 413 132.  
Tel. : 91 99208 30555 / 99875 84555  
E-mail :- sales@spraytechautomation.com | project@spraytechautomation.com



Visit Website