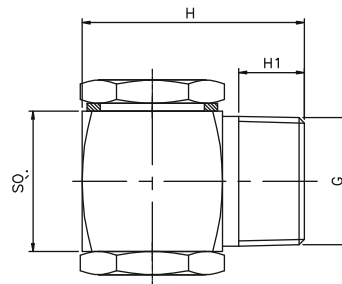
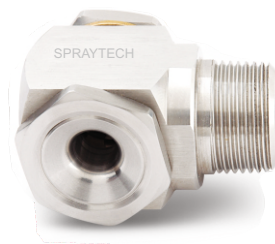


# DI Series Tangential Entry Vaneless Full Cone Spray Nozzles

DI



ONE PIECE BODY  
VANE LESS FULL CONE (TANGENTIAL ENTRY)

## Typical Applications :

Washing and cleaning cooling of gas or solid product surface spraying Improvement of chemical reactions.

MODEL NO.	CONNECTION END					ORIFIC SIZE (mm)	FLOW CAPACITY IN LPM AT DIFFERENT PRESSURE							G/A DIMENSION. MM			
	1/4"	3/8"	1/2"	3/4"	1"		PRESSURE [BAR]							CONN.	H	H1	SQ
	BSP	BSP	BSP	BSP	BSP		0.5	1.0	2.0	3.0	5.0	7.0	10.0				
<b>60° SPRAYNOZZLE</b>																	
DI14.350	●	●				2.6	1.75	2.47	<b>3.50</b>	4.29	5.53	6.55	7.83	1/4"	35	10	20
DI14.400	●	●				2.9	2.00	2.83	<b>4.00</b>	4.90	6.32	7.48	8.94	Weight (Metals) = 72.0 gms. Approx			
DI14.475		●				3.2	2.37	3.36	<b>4.75</b>	5.82	7.51	8.89	10.62	3/8"	35	10	20
DI14.650		●				3.5	3.25	4.60	<b>6.50</b>	7.96	10.28	12.16	14.53	Weight (Metals) = 108 gms. Approx			
<b>90° SPRAYNOZZLE</b>																	
DI16.350	●					2.6	1.75	2.47	<b>3.50</b>	4.29	5.53	6.55	7.83	1/2"	45	13.2	25
DI16.400	●					2.9	2.00	2.83	<b>4.00</b>	4.90	6.32	7.48	8.94	Weight (Metals) = 135.0 gms. Approx			
DI16.475		●				3.2	2.37	3.36	<b>4.75</b>	5.82	7.51	8.89	10.62	3/4"	57	16	32
DI16.650		●				3.5	3.25	4.60	<b>6.50</b>	7.96	10.28	12.16	14.53	Weight (Metals) = 630.0 gms. Approx			
DI16.800		●				3.6	4.00	5.66	<b>8.00</b>	9.80	12.65	14.97	17.89	1"	57	18	36
DI26.100		●				4.3	5.00	7.07	<b>10.00</b>	12.25	15.81	18.71	22.36	Weight (Metals) = XX gms. Approx			
DI26.125		●				5.1	6.25	8.84	<b>12.50</b>	15.31	19.76	23.39	27.95				
DI26.160		●				5.8	8.00	11.31	<b>16.00</b>	19.60	25.30	29.93	35.78				
DI26.200			●			6.5	10.00	14.14	<b>20.00</b>	24.49	31.62	37.42	44.72				
DI26.225			●			7.3	11.25	15.91	<b>22.50</b>	27.56	35.58	42.09	50.31				
DI26.250			●			9.6	12.50	17.68	<b>25.00</b>	30.62	39.53	46.77	55.90				
DI26.320				●		11.5	16.00	22.63	<b>32.00</b>	39.19	50.60	59.87	71.55				
DI26.400					●	8.5	20.00	28.28	<b>40.00</b>	48.99	63.25	74.83	89.44				
DI26.520					●	10.5	26.00	36.77	<b>52.00</b>	63.69	82.22	97.28	116.28				
<b>120° SPRAYNOZZLE</b>																	
DI18.350	●					2.2	1.75	2.47	<b>3.50</b>	4.29	5.53	6.55	7.83				
DI18.400	●					2.5	2.00	2.83	<b>4.00</b>	4.90	6.32	7.48	8.94				
DI18.475		●				2.9	2.37	3.36	<b>4.75</b>	5.82	7.51	8.89	10.62				
DI18.650		●				3.5	3.25	4.60	<b>6.50</b>	7.96	10.28	12.16	14.53				
DI18.800		●				3.6	4.00	5.66	<b>8.00</b>	9.80	12.65	14.97	17.89				
DI28.100		●				4.3	5.00	7.07	<b>10.00</b>	12.25	15.81	18.71	22.36				
DI28.125		●				5.1	6.25	8.84	<b>12.50</b>	15.31	19.76	23.39	27.95				
DI28.160		●	●			5.8	8.00	11.31	<b>16.00</b>	19.60	25.30	29.93	35.78				
DI28.200			●			6.5	10.00	14.14	<b>20.00</b>	24.49	31.62	37.42	44.72				
DI28.225			●			7.3	11.25	15.91	<b>22.50</b>	27.56	35.58	42.09	50.31				
DI28.250			●			9.6	12.50	17.68	<b>25.00</b>	30.62	39.53	46.77	55.90				
DI28.320				●		11.5	16.00	22.63	<b>32.00</b>	39.19	50.60	59.87	71.55				
DI28.400					●	8.5	20.00	28.28	<b>40.00</b>	48.99	63.25	74.83	89.44				
DI28.520					●	10.5	26.00	36.77	<b>52.00</b>	63.69	82.22	97.28	116.28				
DI28.650					●	11.7	32.50	45.96	<b>65.00</b>	79.61	102.77	121.60	145.34				
DI28.720					●	12.4	36.00	50.91	<b>72.00</b>	88.18	113.8	134.7	161.0				
DI28.800					●	13.0	40.00	56.57	<b>80.00</b>	97.98	126.49	149.67	178.89				

End Connection : X – BSP, Y - BSPT, Z – NPT Available.